

ARHGEF6 Antibody (C-term)
Affinity Purified Rabbit Polyclonal Antibody (Pab)
Catalog # AP16738b

Specification

ARHGEF6 Antibody (C-term) - Product Information

Application	WB,E
Primary Accession	O15052
Other Accession	NP_004831.1
Reactivity	Human
Host	Rabbit
Clonality	Polyclonal
Isotype	Rabbit IgG
Calculated MW	87499
Antigen Region	614-641

ARHGEF6 Antibody (C-term) - Additional Information

Gene ID 9459

Other Names

Rho guanine nucleotide exchange factor 6, Alpha-Pix, COOL-2, PAK-interacting exchange factor alpha, Rac/Cdc42 guanine nucleotide exchange factor 6, ARHGEF6, COOL2, KIAA0006, PIXA

Target/Specificity

This ARHGEF6 antibody is generated from rabbits immunized with a KLH conjugated synthetic peptide between 614-641 amino acids from the C-terminal region of human ARHGEF6.

Dilution

WB~~1:1000

E~~Use at an assay dependent concentration.

Format

Purified polyclonal antibody supplied in PBS with 0.09% (W/V) sodium azide. This antibody is purified through a protein A column, followed by peptide affinity purification.

Storage

Maintain refrigerated at 2-8°C for up to 2 weeks. For long term storage store at -20°C in small aliquots to prevent freeze-thaw cycles.

Precautions

ARHGEF6 Antibody (C-term) is for research use only and not for use in diagnostic or therapeutic procedures.

ARHGEF6 Antibody (C-term) - Protein Information

Name ARHGEF6

Synonyms COOL2, KIAA0006, PIXA

Function Acts as a RAC1 guanine nucleotide exchange factor (GEF).

Cellular Location

Cell projection, lamellipodium {ECO:0000250|UniProtKB:Q8K4I3}

Tissue Location

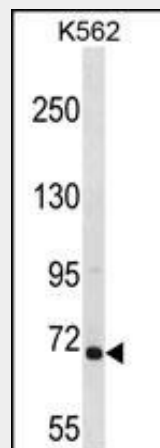
Ubiquitous.

ARHGEF6 Antibody (C-term) - Protocols

Provided below are standard protocols that you may find useful for product applications.

- [Western Blot](#)
- [Blocking Peptides](#)
- [Dot Blot](#)
- [Immunohistochemistry](#)
- [Immunofluorescence](#)
- [Immunoprecipitation](#)
- [Flow Cytometry](#)
- [Cell Culture](#)

ARHGEF6 Antibody (C-term) - Images



ARHGEF6 Antibody (C-term) (Cat. #AP16738b) western blot analysis in K562 cell line lysates (35ug/lane). This demonstrates the ARHGEF6 antibody detected the ARHGEF6 protein (arrow).

ARHGEF6 Antibody (C-term) - Background

Rho GTPases play a fundamental role in numerous cellular processes that are initiated by extracellular stimuli that work through G protein coupled receptors. The encoded protein belongs to a family of cytoplasmic proteins that activate the Ras-like family of Rho proteins by exchanging bound GDP for GTP. It may form a complex with G proteins and stimulate Rho-dependent signals. This protein is activated by PI3-kinase. Mutations in this gene can cause X-chromosomal non-specific mental retardation. [provided by RefSeq].

ARHGEF6 Antibody (C-term) - References

- Maiti, A.K. Pharmacogenomics J. 10(2):94-104(2010)
Eriguchi, M., et al. J. Neurol. Sci. 290 (1-2), 80-85 (2010) :
Takefuji, M., et al. J. Hum. Genet. 55(1):42-49(2010)
Lim, J.W., et al. Scand. J. Gastroenterol. 44(10):1166-1172(2009)
Baek, H.Y., et al. Ann. N. Y. Acad. Sci. 1096, 18-23 (2007) :