

**OR1D2 Antibody (C-term)**  
**Affinity Purified Rabbit Polyclonal Antibody (Pab)**  
**Catalog # AP16747b****Specification**

---

**OR1D2 Antibody (C-term) - Product Information**

Application	WB,E
Primary Accession	<a href="#">P34982</a>
Other Accession	<a href="#">NP_002539.2</a>
Reactivity	Human
Host	Rabbit
Clonality	Polyclonal
Isotype	Rabbit IgG
Calculated MW	35240
Antigen Region	286-312

**OR1D2 Antibody (C-term) - Additional Information****Gene ID** 4991**Other Names**

Olfactory receptor 1D2, Olfactory receptor 17-4, OR17-4, Olfactory receptor OR17-6, Olfactory receptor-like protein HGMP07E, OR1D2, OLFR1

**Target/Specificity**

This OR1D2 antibody is generated from rabbits immunized with a KLH conjugated synthetic peptide between 286-312 amino acids from the C-terminal region of human OR1D2.

**Dilution**

WB~~1:1000

**Format**

Purified polyclonal antibody supplied in PBS with 0.09% (W/V) sodium azide. This antibody is purified through a protein A column, followed by peptide affinity purification.

**Storage**

Maintain refrigerated at 2-8°C for up to 2 weeks. For long term storage store at -20°C in small aliquots to prevent freeze-thaw cycles.

**Precautions**

OR1D2 Antibody (C-term) is for research use only and not for use in diagnostic or therapeutic procedures.

**OR1D2 Antibody (C-term) - Protein Information****Name** OR1D2**Synonyms** OLFR1

**Function** Odorant receptor which may be involved in sperm chemotaxis. Bourgeonal is a strong chemoattractant for sperm in vitro and is shown to be a strong agonist for OR1D2 in vitro. May also function in olfactory reception.

**Cellular Location**

Cell membrane; Multi-pass membrane protein. Note=In spermatazoa is localized in the midpiece and is translocated to the head region upon receptor stimulation with bourgeonal

**Tissue Location**

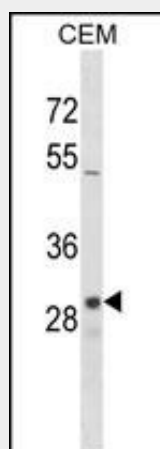
Expressed in testis. Expressed in spermatozoa (at protein level). Expressed in olfactory epithelium

**OR1D2 Antibody (C-term) - Protocols**

Provided below are standard protocols that you may find useful for product applications.

- [Western Blot](#)
- [Blocking Peptides](#)
- [Dot Blot](#)
- [Immunohistochemistry](#)
- [Immunofluorescence](#)
- [Immunoprecipitation](#)
- [Flow Cytometry](#)
- [Cell Culture](#)

**OR1D2 Antibody (C-term) - Images**



OR1D2 Antibody (C-term) (Cat. #AP16747b) western blot analysis in CEM cell line lysates (35ug/lane). This demonstrates the OR1D2 antibody detected the OR1D2 protein (arrow).

**OR1D2 Antibody (C-term) - Background**

Olfactory receptors interact with odorant molecules in the nose, to initiate a neuronal response that triggers the perception of a smell. The olfactory receptor proteins are members of a large family of G-protein-coupled receptors (GPCR) arising from single coding-exon genes. Olfactory receptors share a 7-transmembrane domain structure with many neurotransmitter and hormone receptors and are responsible for the recognition and G protein-mediated transduction of odorant signals. The olfactory receptor gene family is the largest in the genome. The nomenclature assigned to the

olfactory receptor genes and proteins for this organism is independent of other organisms.

#### **OR1D2 Antibody (C-term) - References**

Neuhaus, E.M., et al. J. Cell. Sci. 119 (PT 15), 3047-3056 (2006) :  
Malnic, B., et al. Proc. Natl. Acad. Sci. U.S.A. 101(8):2584-2589(2004)  
Spehr, M., et al. Science 299(5615):2054-2058(2003)  
Fuchs, T., et al. Genomics 80(3):295-302(2002)  
Glusman, G., et al. Genomics 63(2):227-245(2000)