

**LCN8 Antibody (C-term)**  
**Affinity Purified Rabbit Polyclonal Antibody (Pab)**  
**Catalog # AP16750b**

**Specification**

---

**LCN8 Antibody (C-term) - Product Information**

Application	WB,E
Primary Accession	<a href="#">Q6JVE9</a>
Other Accession	<a href="#">NP_848564.2</a>
Reactivity	Human
Host	Rabbit
Clonality	Polyclonal
Isotype	Rabbit IgG
Calculated MW	19080
Antigen Region	111-140

**LCN8 Antibody (C-term) - Additional Information**

**Gene ID** 138307

**Other Names**

Epididymal-specific lipocalin-8, LCN8, LCN5

**Target/Specificity**

This LCN8 antibody is generated from rabbits immunized with a KLH conjugated synthetic peptide between 111-140 amino acids from the C-terminal region of human LCN8.

**Dilution**

WB~~1:1000

E~~Use at an assay dependent concentration.

**Format**

Purified polyclonal antibody supplied in PBS with 0.09% (W/V) sodium azide. This antibody is purified through a protein A column, followed by peptide affinity purification.

**Storage**

Maintain refrigerated at 2-8°C for up to 2 weeks. For long term storage store at -20°C in small aliquots to prevent freeze-thaw cycles.

**Precautions**

LCN8 Antibody (C-term) is for research use only and not for use in diagnostic or therapeutic procedures.

**LCN8 Antibody (C-term) - Protein Information**

**Name** LCN8

**Synonyms** LCN5

**Function** May play a role in male fertility. May act as a retinoid carrier protein within the epididymis.

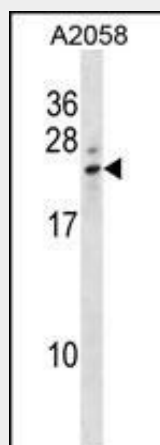
**Cellular Location**  
Secreted.

### LCN8 Antibody (C-term) - Protocols

Provided below are standard protocols that you may find useful for product applications.

- [Western Blot](#)
- [Blocking Peptides](#)
- [Dot Blot](#)
- [Immunohistochemistry](#)
- [Immunofluorescence](#)
- [Immunoprecipitation](#)
- [Flow Cytometry](#)
- [Cell Culture](#)

### LCN8 Antibody (C-term) - Images



LCN8 Antibody (C-term) (Cat. #AP16750b) western blot analysis in A2058 cell line lysates (35ug/lane). This demonstrates the LCN8 antibody detected the LCN8 protein (arrow).

### LCN8 Antibody (C-term) - Background

Members of the lipocalin family, such as LCN8, have a common structure consisting of an 8-stranded antiparallel beta-barrel that forms a cup-shaped ligand-binding pocket or calyx. Lipocalins generally bind small hydrophobic ligands and transport them to specific cells (Suzuki et al., 2004 [PubMed 15363845]).

### LCN8 Antibody (C-term) - References

Suzuki, K., et al. Gene 339, 49-59 (2004) :  
Humphray, S.J., et al. Nature 429(6990):369-374(2004)