

**PRL Antibody (Center)**  
**Affinity Purified Rabbit Polyclonal Antibody (Pab)**  
**Catalog # AP16751c**

**Specification**

---

**PRL Antibody (Center) - Product Information**

Application	IHC-P, WB,E
Primary Accession	<a href="#">P01236</a>
Other Accession	<a href="#">NP_001157030.1</a> , <a href="#">NP_000939.1</a>
Reactivity	Human
Host	Rabbit
Clonality	Polyclonal
Isotype	Rabbit IgG
Calculated MW	25876
Antigen Region	48-76

**PRL Antibody (Center) - Additional Information**

**Gene ID** 5617

**Other Names**

Prolactin, PRL, PRL

**Target/Specificity**

This PRL antibody is generated from rabbits immunized with a KLH conjugated synthetic peptide between 48-76 amino acids from the Central region of human PRL.

**Dilution**

IHC-P~~1:100

WB~~1:1000

E~~Use at an assay dependent concentration.

**Format**

Purified polyclonal antibody supplied in PBS with 0.09% (W/V) sodium azide. This antibody is purified through a protein A column, followed by peptide affinity purification.

**Storage**

Maintain refrigerated at 2-8°C for up to 2 weeks. For long term storage store at -20°C in small aliquots to prevent freeze-thaw cycles.

**Precautions**

PRL Antibody (Center) is for research use only and not for use in diagnostic or therapeutic procedures.

**PRL Antibody (Center) - Protein Information**

**Name** PRL

**Function** Prolactin acts primarily on the mammary gland by promoting lactation.

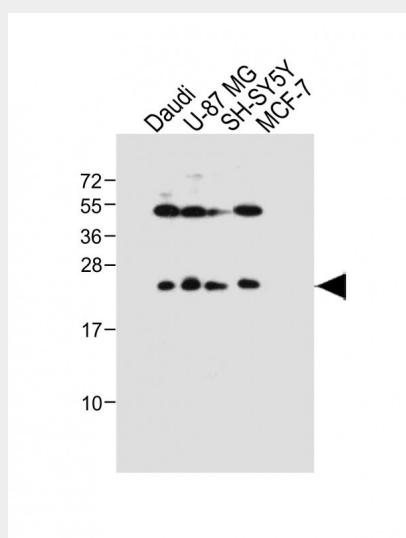
**Cellular Location**  
Secreted.

### PRL Antibody (Center) - Protocols

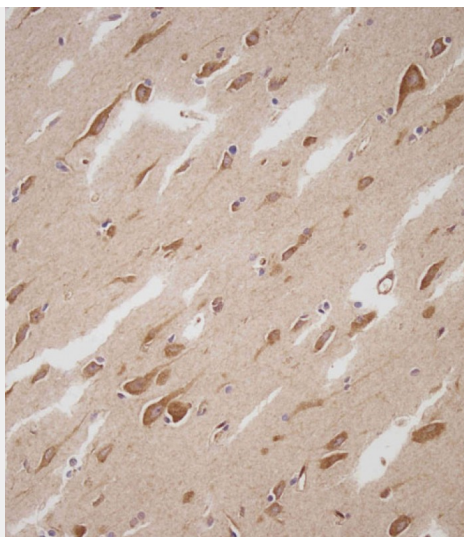
Provided below are standard protocols that you may find useful for product applications.

- [Western Blot](#)
- [Blocking Peptides](#)
- [Dot Blot](#)
- [Immunohistochemistry](#)
- [Immunofluorescence](#)
- [Immunoprecipitation](#)
- [Flow Cytometry](#)
- [Cell Culture](#)

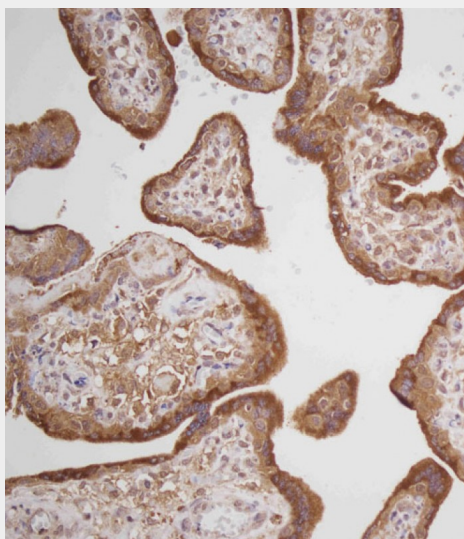
### PRL Antibody (Center) - Images



All lanes : Anti-PRL Antibody (Center) at 1:1000 dilution Lane 1: Daudi whole cell lysate Lane 2: U-87 MG whole cell lysate Lane 3: SH-SY5Y whole cell lysate Lane 4: MCF-7 whole cell lysate Lysates/proteins at 20 µg per lane. Secondary Goat Anti-Rabbit IgG, (H+L), Peroxidase conjugated at 1/10000 dilution. Predicted band size : 26 kDa Blocking/Dilution buffer: 5% NFDM/TBST.



Immunohistochemical analysis of AP16751C on paraffin-embedded Human brain tissue. Tissue was fixed with formaldehyde at room temperature. Heat induced epitope retrieval was performed by EDTA buffer (pH9. 0). Samples were incubated with primary antibody(1:100) for 1 hour at room temperature. Undiluted CRF Anti-Polyvalent HRP Polymer antibody was used as the secondary antibody.



Immunohistochemical analysis of AP16751C on paraffin-embedded Human placenta tissue. Tissue was fixed with formaldehyde at room temperature. Heat induced epitope retrieval was performed by EDTA buffer (pH9. 0). Samples were incubated with primary antibody(1:100) for 1 hour at room temperature. Undiluted CRF Anti-Polyvalent HRP Polymer antibody was used as the secondary antibody.

#### **PRL Antibody (Center) - Background**

PRL prolactin acts primarily on the mammary gland by promoting lactation.

#### **PRL Antibody (Center) - References**

Ucisik-Akkaya, E., et al. Mol. Hum. Reprod. 16(10):770-777(2010)  
Strauss, J.S., et al. Psychoneuroendocrinology 35(9):1422-1428(2010)  
Gordon, I., et al. Horm Behav 58(3):513-518(2010)  
Voorhees, J.L., et al. J. Biol. Chem. 285(26):20022-20030(2010)

Yokoyama, K., et al. Nephron Clin Pract 115 (4), C237-C243 (2010) :