

GPX8 Antibody (C-term)
Affinity Purified Rabbit Polyclonal Antibody (Pab)
Catalog # AP16753b

Specification

GPX8 Antibody (C-term) - Product Information

Application	WB,E
Primary Accession	Q8TED1
Other Accession	NP_001008398.2
Reactivity	Human
Host	Rabbit
Clonality	Polyclonal
Isotype	Rabbit IgG
Calculated MW	23881
Antigen Region	164-193

GPX8 Antibody (C-term) - Additional Information

Gene ID 493869

Other Names

Probable glutathione peroxidase 8, GPx-8, GSHPx-8, GPX8

Target/Specificity

This GPX8 antibody is generated from rabbits immunized with a KLH conjugated synthetic peptide between 164-193 amino acids from the C-terminal region of human GPX8.

Dilution

WB~~1:1000

Format

Purified polyclonal antibody supplied in PBS with 0.09% (W/V) sodium azide. This antibody is purified through a protein A column, followed by peptide affinity purification.

Storage

Maintain refrigerated at 2-8°C for up to 2 weeks. For long term storage store at -20°C in small aliquots to prevent freeze-thaw cycles.

Precautions

GPX8 Antibody (C-term) is for research use only and not for use in diagnostic or therapeutic procedures.

GPX8 Antibody (C-term) - Protein Information

Name GPX8

Cellular Location

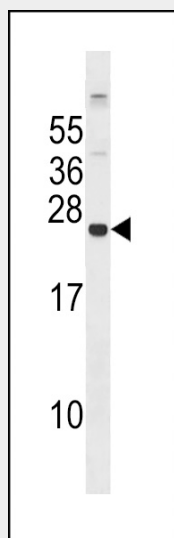
Membrane; Single-pass membrane protein

GPX8 Antibody (C-term) - Protocols

Provided below are standard protocols that you may find useful for product applications.

- [Western Blot](#)
- [Blocking Peptides](#)
- [Dot Blot](#)
- [Immunohistochemistry](#)
- [Immunofluorescence](#)
- [Immunoprecipitation](#)
- [Flow Cytometry](#)
- [Cell Culture](#)

GPX8 Antibody (C-term) - Images



GPX8 Antibody (C-term) (Cat. #AP16753b) western blot analysis in 293 cell line lysates (35ug/lane). This demonstrates the GPX8 antibody detected the GPX8 protein (arrow).

GPX8 Antibody (C-term) - Background

GPX8 belongs to the glutathione peroxidase family. Glutathione peroxidase is an enzyme whose principal function is to protect against damage from endogenously-formed hydroxyperoxides, catalysing the reduction of hydroxyperoxides by glutathione. Several forms of the enzyme are known. It has a catalytic activity of $2 \text{ glutathione} + \text{H}_2\text{O}_2 = \text{glutathione disulfide} + 2 \text{H}_2\text{O}$.

GPX8 Antibody (C-term) - References

Toppo, S., et al. Antioxid. Redox Signal. 10(9):1501-1514(2008)
Lamesch, P., et al. Genomics 89(3):307-315(2007)
Clark, H.F., et al. Genome Res. 13(10):2265-2270(2003)