

KRT3 Antibody (Center)
Affinity Purified Rabbit Polyclonal Antibody (Pab)
Catalog # AP16759c**Specification**

KRT3 Antibody (Center) - Product Information

Application	WB,E
Primary Accession	P12035
Other Accession	NP_476429.2
Reactivity	Human
Host	Rabbit
Clonality	Polyclonal
Isotype	Rabbit IgG
Calculated MW	64417
Antigen Region	414-441

KRT3 Antibody (Center) - Additional Information**Gene ID** 3850**Other Names**

Keratin, type II cytoskeletal 3, 65 kDa cytokeratin, Cytokeratin-3, CK-3, Keratin-3, K3, Type-II keratin Kb3, KRT3

Target/Specificity

This KRT3 antibody is generated from rabbits immunized with a KLH conjugated synthetic peptide between 414-441 amino acids from the Central region of human KRT3.

Dilution

WB~~1:1000

Format

Purified polyclonal antibody supplied in PBS with 0.09% (W/V) sodium azide. This antibody is purified through a protein A column, followed by peptide affinity purification.

Storage

Maintain refrigerated at 2-8°C for up to 2 weeks. For long term storage store at -20°C in small aliquots to prevent freeze-thaw cycles.

Precautions

KRT3 Antibody (Center) is for research use only and not for use in diagnostic or therapeutic procedures.

KRT3 Antibody (Center) - Protein Information**Name** KRT3**Tissue Location**

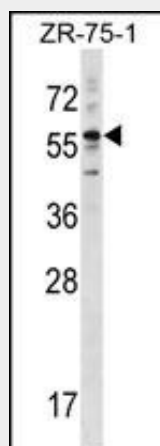
Cornea specific.

KRT3 Antibody (Center) - Protocols

Provided below are standard protocols that you may find useful for product applications.

- [Western Blot](#)
- [Blocking Peptides](#)
- [Dot Blot](#)
- [Immunohistochemistry](#)
- [Immunofluorescence](#)
- [Immunoprecipitation](#)
- [Flow Cytometry](#)
- [Cell Culture](#)

KRT3 Antibody (Center) - Images



KRT3 Antibody (Center) (Cat. #AP16759c) western blot analysis in ZR-75-1 cell line lysates (35ug/lane). This demonstrates the KRT3 antibody detected the KRT3 protein (arrow).

KRT3 Antibody (Center) - Background

The protein encoded by this gene is a member of the keratin gene family. The type II cytokeratins consist of basic or neutral proteins which are arranged in pairs of heterotypic keratin chains coexpressed during differentiation of simple and stratified epithelial tissues. This type II cytokeratin is specifically expressed in the corneal epithelium with family member KRT12 and mutations in these genes have been associated with Meesmann's Corneal Dystrophy. The type II cytokeratins are clustered in a region of chromosome 12q12-q13.

KRT3 Antibody (Center) - References

Szaflik, J.P., et al. Mol. Vis. 14, 1713-1718 (2008) :
Schweizer, J., et al. J. Cell Biol. 174(2):169-174(2006)
Chen, Y.T., et al. Cornea 24(8):928-932(2005)
Rogers, M.A., et al. J. Invest. Dermatol. 124(3):536-544(2005)
Irvine, A.D., et al. Nat. Genet. 16(2):184-187(1997)