

TRPC4 Antibody (C-term)
Affinity Purified Rabbit Polyclonal Antibody (Pab)
Catalog # AP16760b**Specification**

TRPC4 Antibody (C-term) - Product Information

Application	WB,E
Primary Accession	O9UBN4
Other Accession	P79100 , NP_001129427.1 , NP_001129428.1
Reactivity	Human
Predicted	Bovine
Host	Rabbit
Clonality	Polyclonal
Isotype	Rabbit IgG
Calculated MW	112101
Antigen Region	812-840

TRPC4 Antibody (C-term) - Additional Information**Gene ID** 7223**Other Names**

Short transient receptor potential channel 4, TrpC4, Trp-related protein 4, hTrp-4, hTrp4, TRPC4

Target/Specificity

This TRPC4 antibody is generated from rabbits immunized with a KLH conjugated synthetic peptide between 812-840 amino acids from the C-terminal region of human TRPC4.

Dilution

WB~~1:1000

E~~Use at an assay dependent concentration.

Format

Purified polyclonal antibody supplied in PBS with 0.09% (W/V) sodium azide. This antibody is purified through a protein A column, followed by peptide affinity purification.

Storage

Maintain refrigerated at 2-8°C for up to 2 weeks. For long term storage store at -20°C in small aliquots to prevent freeze-thaw cycles.

Precautions

TRPC4 Antibody (C-term) is for research use only and not for use in diagnostic or therapeutic procedures.

TRPC4 Antibody (C-term) - Protein Information**Name** TRPC4

Function Forms a receptor-activated non-selective calcium permeant cation channel (PubMed:[11042129](#), PubMed:[11713258](#), PubMed:[16144838](#), PubMed:[39478185](#)). Acts as a cell-cell contact-dependent endothelial calcium entry channel (PubMed:[19996314](#)). Forms a homomeric ion channel or a heteromeric ion channel with TRPC1; the heteromeric ion channel has reduced calcium permeability compared to the homomeric channel (PubMed:[39478185](#)). Also permeable to monovalent ions including sodium, lithium and cesium ions (PubMed:[39478185](#)).

Cellular Location

Cell membrane; Multi-pass membrane protein. Note=Enhanced insertion into the cell membrane after activation of the EGF receptor

Tissue Location

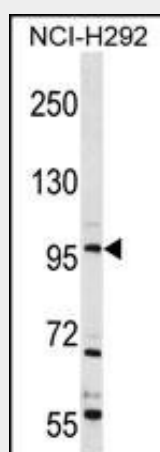
Strongly expressed in placenta. Expressed at lower levels in heart, pancreas, kidney and brain. Expressed in endothelial cells. Isoform alpha was found to be the predominant isoform. Isoform beta was not found in pancreas and brain

TRPC4 Antibody (C-term) - Protocols

Provided below are standard protocols that you may find useful for product applications.

- [Western Blot](#)
- [Blocking Peptides](#)
- [Dot Blot](#)
- [Immunohistochemistry](#)
- [Immunofluorescence](#)
- [Immunoprecipitation](#)
- [Flow Cytometry](#)
- [Cell Culture](#)

TRPC4 Antibody (C-term) - Images



TRPC4 Antibody (C-term) (Cat. #AP16760b) western blot analysis in NCI-H292 cell line lysates (35ug/lane). This demonstrates the TRPC4 antibody detected the TRPC4 protein (arrow).

TRPC4 Antibody (C-term) - Background

Form a receptor-activated non-selective calcium permeant cation channel. Acts as a cell-cell contact-dependent endothelial calcium entry channel. Probably operated by a phosphatidylinositol second messenger system activated by receptor tyrosine kinases or G-protein coupled receptors. Mediates cation entry, with an enhanced permeability to barium over calcium. May also be

activated by intracellular calcium store depletion.

TRPC4 Antibody (C-term) - References

Mace, K.E., et al. J. Cell. Physiol. 225(2):444-453(2010)
von Spiczak, S., et al. Neuromolecular Med. 12(3):292-299(2010)
Pinheiro, A.P., et al. Am. J. Med. Genet. B Neuropsychiatr. Genet. 153B (5), 1070-1080 (2010) :
Rose, J.E., et al. Mol. Med. 16 (7-8), 247-253 (2010) :
Schaefer, M., et al. J. Biol. Chem. 277(5):3752-3759(2002)