

ZDHHC8 Antibody (C-term)
Affinity Purified Rabbit Polyclonal Antibody (Pab)
Catalog # AP16774B

Specification

ZDHHC8 Antibody (C-term) - Product Information

Application	WB,E
Primary Accession	O9ULC8
Other Accession	O5Y5T5 , NP_037505.1 , NP_001171953.1
Reactivity	Human, Mouse
Host	Rabbit
Clonality	Polyclonal
Isotype	Rabbit IgG
Antigen Region	532-561

ZDHHC8 Antibody (C-term) - Additional Information

Gene ID 29801

Other Names

Probable palmitoyltransferase ZDHHC8, Zinc finger DHHC domain-containing protein 8, DHHC-8, Zinc finger protein 378, ZDHHC8, KIAA1292, ZDHHCL1, ZNF378

Target/Specificity

This ZDHHC8 antibody is generated from rabbits immunized with a KLH conjugated synthetic peptide between 532-561 amino acids from the C-terminal region of human ZDHHC8.

Dilution

WB~~1:1000

E~~Use at an assay dependent concentration.

Format

Purified polyclonal antibody supplied in PBS with 0.09% (W/V) sodium azide. This antibody is purified through a protein A column, followed by peptide affinity purification.

Storage

Maintain refrigerated at 2-8°C for up to 2 weeks. For long term storage store at -20°C in small aliquots to prevent freeze-thaw cycles.

Precautions

ZDHHC8 Antibody (C-term) is for research use only and not for use in diagnostic or therapeutic procedures.

ZDHHC8 Antibody (C-term) - Protein Information

Name ZDHHC8 ([HGNC:18474](#))

Function Palmitoyltransferase that catalyzes the addition of palmitate onto various protein

substrates and therefore functions in several unrelated biological processes (Probable). Through the palmitoylation of ABCA1 regulates the localization of the transporter to the plasma membrane and thereby regulates its function in cholesterol and phospholipid efflux (Probable). Could also palmitoylate the D(2) dopamine receptor DRD2 and regulate its stability and localization to the plasma membrane (Probable). Could also play a role in glutamatergic transmission (By similarity).

Cellular Location

Golgi apparatus membrane; Multi-pass membrane protein. Mitochondrion membrane {ECO:0000250|UniProtKB:Q5Y5T5}; Multi-pass membrane protein

Tissue Location

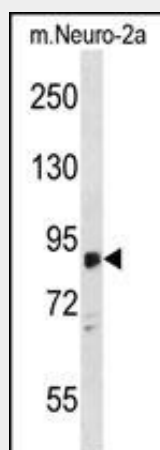
Widely expressed..

ZDHHC8 Antibody (C-term) - Protocols

Provided below are standard protocols that you may find useful for product applications.

- [Western Blot](#)
- [Blocking Peptides](#)
- [Dot Blot](#)
- [Immunohistochemistry](#)
- [Immunofluorescence](#)
- [Immunoprecipitation](#)
- [Flow Cytometry](#)
- [Cell Culture](#)

ZDHHC8 Antibody (C-term) - Images



ZDHHC8 Antibody (C-term) (Cat. #AP16774b) western blot analysis in mouse Neuro-2a cell line lysates (35ug/lane). This demonstrates the ZDHHC8 antibody detected the ZDHHC8 protein (arrow).

ZDHHC8 Antibody (C-term) - Background

This gene encodes a four transmembrane protein that is a member of the zinc finger DHHC domain-containing protein family. The encoded protein may function as a palmitoyltransferase. Defects in this gene may be associated with a susceptibility to schizophrenia. Alternate splicing of this gene results in multiple transcript variants. A pseudogene of this gene is found on

chromosome 22.

ZDHHC8 Antibody (C-term) - References

Shin, H.D., et al. Am. J. Med. Genet. B Neuropsychiatr. Genet. 153B (6), 1167-1172 (2010) :
Pinheiro, A.P., et al. Am. J. Med. Genet. B Neuropsychiatr. Genet. 153B (5), 1070-1080 (2010) :
Xu, M., et al. Am. J. Med. Genet. B Neuropsychiatr. Genet. (2010) In press :
Yang, W., et al. Mol. Cell Proteomics 9(1):54-70(2010)
Singaraja, R.R., et al. Circ. Res. 105(2):138-147(2009)