

XKRX Antibody (C-term)
Affinity Purified Rabbit Polyclonal Antibody (Pab)
Catalog # AP16779b**Specification**

XKRX Antibody (C-term) - Product Information

Application	WB,E
Primary Accession	Q6PP77
Other Accession	NP_997724.2
Reactivity	Human
Host	Rabbit
Clonality	Polyclonal
Isotype	Rabbit IgG
Calculated MW	52052
Antigen Region	317-345

XKRX Antibody (C-term) - Additional Information**Gene ID** 402415**Other Names**

XK-related protein 2, Membrane protein XPLAC, X Kell blood group-related, X-linked, XKRX, XKR2, XPLAC, XRG2

Target/Specificity

This XKRX antibody is generated from rabbits immunized with a KLH conjugated synthetic peptide between 317-345 amino acids from the C-terminal region of human XKRX.

Dilution

WB~~1:1000

E~~Use at an assay dependent concentration.

Format

Purified polyclonal antibody supplied in PBS with 0.09% (W/V) sodium azide. This antibody is purified through a protein A column, followed by peptide affinity purification.

Storage

Maintain refrigerated at 2-8°C for up to 2 weeks. For long term storage store at -20°C in small aliquots to prevent freeze-thaw cycles.

Precautions

XKRX Antibody (C-term) is for research use only and not for use in diagnostic or therapeutic procedures.

XKRX Antibody (C-term) - Protein Information**Name** XKRX

Synonyms XKR2, XPLAC, XRG2

Cellular Location

Cell membrane; Multi-pass membrane protein

Tissue Location

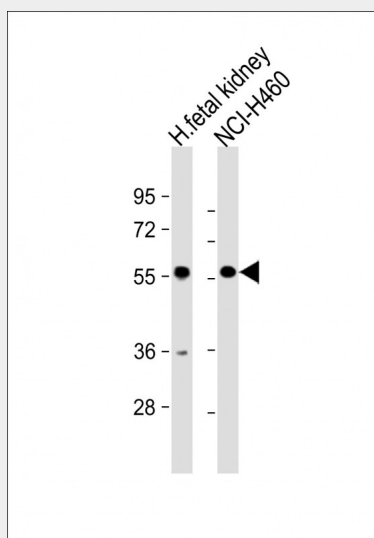
Expressed predominantly in the placenta, in syncytiotrophoblasts. Moderate levels in the adrenal gland, low levels in the trachea and very low levels in the bone marrow

XKRX Antibody (C-term) - Protocols

Provided below are standard protocols that you may find useful for product applications.

- [Western Blot](#)
- [Blocking Peptides](#)
- [Dot Blot](#)
- [Immunohistochemistry](#)
- [Immunofluorescence](#)
- [Immunoprecipitation](#)
- [Flow Cytometry](#)
- [Cell Culture](#)

XKRX Antibody (C-term) - Images



All lanes : Anti-XKRX Antibody (C-term) at 1:1000 dilution Lane 1: human fetal kidney lysate Lane 2: NCI-H460 whole cell lysate Lysates/proteins at 20 µg per lane. Secondary Goat Anti-Rabbit IgG, (H+L), Peroxidase conjugated at 1/10000 dilution. Predicted band size : 52 kDa Blocking/Dilution buffer: 5% NFDM/TBST.

XKRX Antibody (C-term) - Background

This gene encodes a protein that is related to a component of the XK/Kell complex of the Kell blood group system. The encoded protein includes several transmembrane domains, is known to be exposed to the cell surface, and may function as a membrane transporter.

XKRX Antibody (C-term) - References

Calenda, G., et al. Gene 370, 6-16 (2006) :