

**SVOPL Antibody (Center)**  
**Affinity Purified Rabbit Polyclonal Antibody (Pab)**  
**Catalog # AP16781C****Specification**

---

**SVOPL Antibody (Center) - Product Information**

Application	WB,E
Primary Accession	<a href="#">Q8N434</a>
Other Accession	<a href="#">NP_001132928.1</a> , <a href="#">NP_777619.1</a>
Reactivity	Human
Host	Rabbit
Clonality	Polyclonal
Isotype	Rabbit IgG
Calculated MW	53991
Antigen Region	241-269

**SVOPL Antibody (Center) - Additional Information****Gene ID** 136306**Other Names**

Putative transporter SVOPL, SV2-related protein-like, SVOP-like protein, SVOPL

**Target/Specificity**

This SVOPL antibody is generated from rabbits immunized with a KLH conjugated synthetic peptide between 241-269 amino acids from the Central region of human SVOPL.

**Dilution**

WB~~1:1000

**Format**

Purified polyclonal antibody supplied in PBS with 0.09% (W/V) sodium azide. This antibody is purified through a protein A column, followed by peptide affinity purification.

**Storage**

Maintain refrigerated at 2-8°C for up to 2 weeks. For long term storage store at -20°C in small aliquots to prevent freeze-thaw cycles.

**Precautions**

SVOPL Antibody (Center) is for research use only and not for use in diagnostic or therapeutic procedures.

**SVOPL Antibody (Center) - Protein Information****Name** SVOPL**Cellular Location**

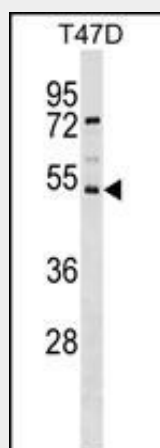
Membrane; Multi-pass membrane protein

## SVOPL Antibody (Center) - Protocols

Provided below are standard protocols that you may find useful for product applications.

- [Western Blot](#)
- [Blocking Peptides](#)
- [Dot Blot](#)
- [Immunohistochemistry](#)
- [Immunofluorescence](#)
- [Immunoprecipitation](#)
- [Flow Cytometry](#)
- [Cell Culture](#)

## SVOPL Antibody (Center) - Images



SVOPL Antibody (Center) (Cat. #AP16781c) western blot analysis in T47D cell line lysates (35ug/lane). This demonstrates the SVOPL antibody detected the SVOPL protein (arrow).

## SVOPL Antibody (Center) - Background

SVOPL (putative transporter SVOPL), also known as SV2-related protein-like, is a 492 amino acid multi-pass membrane protein belonging to the major facilitator superfamily. SVOPL is a paralog to synaptic vesicle protein (SVOP) that exists as two alternatively spliced isoforms. The gene encoding SVOPL maps to human chromosome 7q34. Chromosome 7 is approximately 158 million bases long, encodes over 1,000 genes and makes up approximately 5% of the human genome. Chromosome 7 has been linked to Osteogenesis imperfecta, Pendred syndrome, Lissencephaly, Citrullinemia and Shwachman-Diamond syndrome. Deletions of portions of the q arm of chromosome 7 are linked to myeloid disorders, including acute myelogenous leukemia and myelodysplasia.

## SVOPL Antibody (Center) - References

Jacobsson, J.A., et al. Genomics 90(5):595-609(2007)