

**C18orf26 Antibody (N-term)**  
**Affinity Purified Rabbit Polyclonal Antibody (Pab)**  
**Catalog # AP16785a**

**Specification**

---

**C18orf26 Antibody (N-term) - Product Information**

Application	WB,E
Primary Accession	<a href="#">Q8N1N2</a>
Other Accession	<a href="#">NP_775900.1</a>
Reactivity	Human
Host	Rabbit
Clonality	Polyclonal
Isotype	Rabbit IgG
Calculated MW	22529
Antigen Region	6-34

**C18orf26 Antibody (N-term) - Additional Information**

**Gene ID** 284254

**Other Names**

Dynactin-associated protein, Full, DYNAP, C18orf26

**Target/Specificity**

This C18orf26 antibody is generated from rabbits immunized with a KLH conjugated synthetic peptide between 6-34 amino acids from the N-terminal region of human C18orf26.

**Dilution**

WB~~1:1000

**Format**

Purified polyclonal antibody supplied in PBS with 0.09% (W/V) sodium azide. This antibody is purified through a protein A column, followed by peptide affinity purification.

**Storage**

Maintain refrigerated at 2-8°C for up to 2 weeks. For long term storage store at -20°C in small aliquots to prevent freeze-thaw cycles.

**Precautions**

C18orf26 Antibody (N-term) is for research use only and not for use in diagnostic or therapeutic procedures.

**C18orf26 Antibody (N-term) - Protein Information**

**Name** DYNAP

**Synonyms** C18orf26

**Function** Plays a role in the regulation of cell proliferation. Promotes activation of the AKT1 signaling pathway. Promotes phosphorylation of AKT1 at 'Ser-473'.

**Cellular Location**

Golgi apparatus membrane; Single-pass membrane protein. Cell membrane; Single-pass membrane protein. Note=Concentrated at cell-cell borders Localizes at membranes in a microtubule-dependent manner

**Tissue Location**

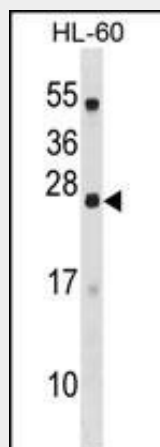
Expressed in fibroblast and numerous cancer cell lines (at protein level).

**C18orf26 Antibody (N-term) - Protocols**

Provided below are standard protocols that you may find useful for product applications.

- [Western Blot](#)
- [Blocking Peptides](#)
- [Dot Blot](#)
- [Immunohistochemistry](#)
- [Immunofluorescence](#)
- [Immunoprecipitation](#)
- [Flow Cytometry](#)
- [Cell Culture](#)

**C18orf26 Antibody (N-term) - Images**



C18orf26 Antibody (N-term) (Cat. #AP16785a) western blot analysis in HL-60 cell line lysates (35ug/lane). This demonstrates the C18orf26 antibody detected the C18orf26 protein (arrow).

**C18orf26 Antibody (N-term) - Background**

C18orf26 (chromosome 18 open reading frame 26) is a 210 amino acid single pass membrane protein that is encoded by a gene which maps to human chromosome 18. Chromosome 18 houses over 300 protein-coding genes and contains nearly 76 million nucleotide bases. There are a variety of diseases associated with defects in chromosome 18-localized genes, some of which include Trisomy 18 (also known as Edwards syndrome), Niemann-Pick disease, hereditary hemorrhagic telangiectasia, erythropoietic protoporphyria and follicular lymphomas.

**C18orf26 Antibody (N-term) - References**

Kunoh, T., et al. Mol. Cancer Ther. 9(11):2934-2942(2010)