

SHBG Antibody (N-term)
Affinity Purified Rabbit Polyclonal Antibody (Pab)
Catalog # AP16796a**Specification**

SHBG Antibody (N-term) - Product Information

Application	WB,E
Primary Accession	P04278
Other Accession	NP_001031.2
Reactivity	Human
Host	Rabbit
Clonality	Polyclonal
Isotype	Rabbit IgG
Calculated MW	43779
Antigen Region	69-96

SHBG Antibody (N-term) - Additional Information**Gene ID** 6462**Other Names**

Sex hormone-binding globulin, SHBG, Sex steroid-binding protein, SBP, Testis-specific androgen-binding protein, ABP, Testosterone-estradiol-binding globulin, TeBG, Testosterone-estrogen-binding globulin, SHBG

Target/Specificity

This SHBG antibody is generated from rabbits immunized with a KLH conjugated synthetic peptide between 69-96 amino acids from the N-terminal region of human SHBG.

Dilution

WB~~1:1000

E~~Use at an assay dependent concentration.

Format

Purified polyclonal antibody supplied in PBS with 0.09% (W/V) sodium azide. This antibody is purified through a protein A column, followed by peptide affinity purification.

Storage

Maintain refrigerated at 2-8°C for up to 2 weeks. For long term storage store at -20°C in small aliquots to prevent freeze-thaw cycles.

Precautions

SHBG Antibody (N-term) is for research use only and not for use in diagnostic or therapeutic procedures.

SHBG Antibody (N-term) - Protein Information**Name** SHBG ([HGNC:10839](#))

Function Functions as an androgen transport protein, but may also be involved in receptor mediated processes. Each dimer binds one molecule of steroid. Specific for 5-alpha-dihydrotestosterone, testosterone, and 17-beta-estradiol. Regulates the plasma metabolic clearance rate of steroid hormones by controlling their plasma concentration.

Cellular Location

Secreted. Note=In testis, it is synthesized by the Sertoli cells, secreted into the lumen of the seminiferous tubule and transported to the epididymis.

Tissue Location

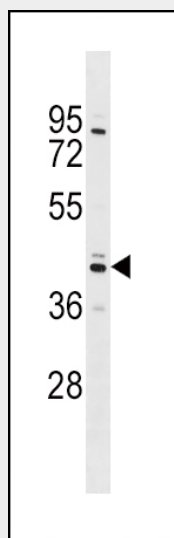
Isoform 1 and isoform 2 are present in liver and testis

SHBG Antibody (N-term) - Protocols

Provided below are standard protocols that you may find useful for product applications.

- [Western Blot](#)
- [Blocking Peptides](#)
- [Dot Blot](#)
- [Immunohistochemistry](#)
- [Immunofluorescence](#)
- [Immunoprecipitation](#)
- [Flow Cytometry](#)
- [Cell Culture](#)

SHBG Antibody (N-term) - Images



SHBG Antibody (N-term) (Cat. #AP16796a) western blot analysis in 293 cell line lysates (35ug/lane). This demonstrates the SHBG antibody detected the SHBG protein (arrow).

SHBG Antibody (N-term) - Background

This gene encodes a steroid binding protein that was first described as a plasma protein secreted by the liver but is now thought to participate in the regulation of steroid responses. The encoded protein binds each steroid molecule as a dimer formed from identical or nearly identical monomers. The use of alternate

promoters and alternatively spliced transcripts have been described. Multiple transcript variants encoding different isoforms have been found for this gene.

SHBG Antibody (N-term) - References

Canzian, F., et al. Hum. Mol. Genet. 19(19):3873-3884(2010)
Xita, N., et al. Exp. Clin. Endocrinol. Diabetes (2010) In press :
Diaz, M., et al. Fertil. Steril. (2010) In press :
Hatzi, E., et al. Gynecol. Endocrinol. (2010) In press :
Iwasaki, M., et al. Nutr Cancer 62(4):466-475(2010)