

P2RX1 Antibody (C-term)
Affinity Purified Rabbit Polyclonal Antibody (Pab)
Catalog # AP16798b

Specification

P2RX1 Antibody (C-term) - Product Information

Application	WB,E
Primary Accession	P51575
Other Accession	P47824 , P51576 , NP_002549.1
Reactivity	Human
Predicted	Mouse, Rat
Host	Rabbit
Clonality	Polyclonal
Isotype	Rabbit IgG
Calculated MW	44980
Antigen Region	345-372

P2RX1 Antibody (C-term) - Additional Information

Gene ID 5023

Other Names

P2X purinoceptor 1, P2X1, ATP receptor, Purinergic receptor, P2RX1, P2X1

Target/Specificity

This P2RX1 antibody is generated from rabbits immunized with a KLH conjugated synthetic peptide between 345-372 amino acids from the C-terminal region of human P2RX1.

Dilution

WB~~1:1000

Format

Purified polyclonal antibody supplied in PBS with 0.09% (W/V) sodium azide. This antibody is purified through a protein A column, followed by peptide affinity purification.

Storage

Maintain refrigerated at 2-8°C for up to 2 weeks. For long term storage store at -20°C in small aliquots to prevent freeze-thaw cycles.

Precautions

P2RX1 Antibody (C-term) is for research use only and not for use in diagnostic or therapeutic procedures.

P2RX1 Antibody (C-term) - Protein Information

Name P2RX1

Synonyms P2X1

Function Ligand-gated ion channel with relatively high calcium permeability. Binding to ATP mediates synaptic transmission between neurons and from neurons to smooth muscle. Seems to be linked to apoptosis, by increasing the intracellular concentration of calcium in the presence of ATP, leading to programmed cell death (By similarity).

Cellular Location

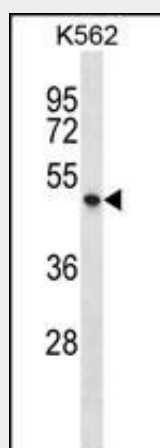
Membrane; Multi-pass membrane protein.

P2RX1 Antibody (C-term) - Protocols

Provided below are standard protocols that you may find useful for product applications.

- [Western Blot](#)
- [Blocking Peptides](#)
- [Dot Blot](#)
- [Immunohistochemistry](#)
- [Immunofluorescence](#)
- [Immunoprecipitation](#)
- [Flow Cytometry](#)
- [Cell Culture](#)

P2RX1 Antibody (C-term) - Images



P2RX1 Antibody (C-term) (Cat. #AP16798b) western blot analysis in K562 cell line lysates (35ug/lane). This demonstrates the P2RX1 antibody detected the P2RX1 protein (arrow).

P2RX1 Antibody (C-term) - Background

The product of this gene belongs to the family of purinoceptors for ATP. This receptor functions as a ligand-gated ion channel with relatively high calcium permeability. Binding to ATP mediates synaptic transmission between neurons and from neurons to smooth muscle, being responsible, for example, for sympathetic vasoconstriction in small arteries, arterioles and vas deferens. Mouse studies suggest that this receptor is essential for normal male reproductive function. It is possible that the development of selective antagonists for this receptor may provide an effective non-hormonal male contraceptive pill.

P2RX1 Antibody (C-term) - References

Allsopp, R.C., et al. J. Biol. Chem. 285(43):32770-32777(2010)
Harper, M.T., et al. J. Thromb. Haemost. 8(7):1604-1613(2010)
Lalo, U., et al. J. Neurochem. 113(5):1177-1187(2010)
Varani, K., et al. Cell. Physiol. Biochem. 25 (2-3), 325-336 (2010) :
Corriden, R., et al. Sci Signal 3 (104), RE1 (2010) :