

ICA1 Antibody (N-term)
Affinity Purified Rabbit Polyclonal Antibody (Pab)
Catalog # AP16802A**Specification**

ICA1 Antibody (N-term) - Product Information

Application	WB,E
Primary Accession	Q05084
Other Accession	Q63054 , P97411 , NP_071682.1 , NP_001129492.1
Reactivity	Human
Predicted	Mouse, Rat
Host	Rabbit
Clonality	Polyclonal
Isotype	Rabbit IgG
Calculated MW	54645
Antigen Region	84-111

ICA1 Antibody (N-term) - Additional Information**Gene ID** 3382**Other Names**

Islet cell autoantigen 1, 69 kDa islet cell autoantigen, ICA69, Islet cell autoantigen p69, ICAp69, p69, ICA1

Target/Specificity

This ICA1 antibody is generated from rabbits immunized with a KLH conjugated synthetic peptide between 84-111 amino acids from the N-terminal region of human ICA1.

Dilution

WB~~1:1000

Format

Purified polyclonal antibody supplied in PBS with 0.09% (W/V) sodium azide. This antibody is purified through a protein A column, followed by peptide affinity purification.

Storage

Maintain refrigerated at 2-8°C for up to 2 weeks. For long term storage store at -20°C in small aliquots to prevent freeze-thaw cycles.

Precautions

ICA1 Antibody (N-term) is for research use only and not for use in diagnostic or therapeutic procedures.

ICA1 Antibody (N-term) - Protein Information**Name** ICA1

Function May play a role in neurotransmitter secretion.

Cellular Location

Cytoplasm, cytosol. Golgi apparatus membrane; Peripheral membrane protein. Cytoplasmic vesicle, secretory vesicle membrane; Peripheral membrane protein. Cytoplasmic vesicle, secretory vesicle, synaptic vesicle membrane; Peripheral membrane protein. Note=Predominantly cytosolic. Also exists as a membrane-bound form which has been found associated with synaptic vesicles and also with the Golgi complex and immature secretory granules

Tissue Location

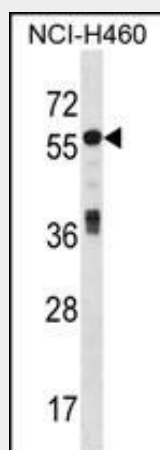
Expressed abundantly in pancreas, heart and brain with low levels of expression in lung, kidney, liver and thyroid

ICA1 Antibody (N-term) - Protocols

Provided below are standard protocols that you may find useful for product applications.

- [Western Blot](#)
- [Blocking Peptides](#)
- [Dot Blot](#)
- [Immunohistochemistry](#)
- [Immunofluorescence](#)
- [Immunoprecipitation](#)
- [Flow Cytometry](#)
- [Cell Culture](#)

ICA1 Antibody (N-term) - Images



ICA1 Antibody (N-term) (Cat. #AP16802a) western blot analysis in NCI-H460 cell line lysates (35ug/lane). This demonstrates the ICA1 antibody detected the ICA1 protein (arrow).

ICA1 Antibody (N-term) - Background

This gene encodes a protein with an arfaptin homology domain that is found both in the cytosol and as membrane-bound form on the Golgi complex and immature secretory granules. This protein is believed to be an autoantigen in insulin-dependent diabetes mellitus and primary Sjogren's syndrome. Alternatively spliced variants which encode different protein isoforms have been described; however, not all variants have been fully characterized.

ICA1 Antibody (N-term) - References

Jin, Y., et al. Nat. Genet. 42(7):576-578(2010)
Rose, J. Phd, et al. Mol. Med. (2010) In press :
Buffa, L., et al. Eur. J. Cell Biol. 87(4):197-209(2008)
Ewing, R.M., et al. Mol. Syst. Biol. 3, 89 (2007) :
Gordon, T.P., et al. Lupus 13(6):483-484(2004)