

**KRT75 Antibody (N-term)**  
**Affinity Purified Rabbit Polyclonal Antibody (Pab)**  
**Catalog # AP16811A****Specification**

---

**KRT75 Antibody (N-term) - Product Information**

Application	WB,E
Primary Accession	<a href="#">O95678</a>
Other Accession	<a href="#">NP_004684.2</a>
Reactivity	Human
Host	Rabbit
Clonality	Polyclonal
Isotype	Rabbit IgG
Calculated MW	59560
Antigen Region	66-92

**KRT75 Antibody (N-term) - Additional Information****Gene ID** 9119**Other Names**

Keratin, type II cytoskeletal 75, Cytokeratin-75, CK-75, Keratin-6 hair follicle, hK6hf, Keratin-75, K75, Type II keratin-K6hf, Type-II keratin Kb18, KRT75, K6HF, KB18

**Target/Specificity**

This KRT75 antibody is generated from rabbits immunized with a KLH conjugated synthetic peptide between 66-92 amino acids from the N-terminal region of human KRT75.

**Dilution**

WB~~1:1000

E~~Use at an assay dependent concentration.

**Format**

Purified polyclonal antibody supplied in PBS with 0.09% (W/V) sodium azide. This antibody is purified through a protein A column, followed by peptide affinity purification.

**Storage**

Maintain refrigerated at 2-8°C for up to 2 weeks. For long term storage store at -20°C in small aliquots to prevent freeze-thaw cycles.

**Precautions**

KRT75 Antibody (N-term) is for research use only and not for use in diagnostic or therapeutic procedures.

**KRT75 Antibody (N-term) - Protein Information****Name** KRT75

**Synonyms** K6HF, KB18

**Function** Plays a central role in hair and nail formation. Essential component of keratin intermediate filaments in the companion layer of the hair follicle.

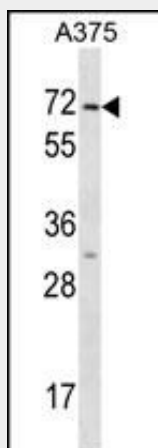
**Tissue Location**

Highly expressed in hair follicles from scalp. Specifically expressed in the of the hair companion layer follicle, a single layered band of flat and vertically oriented cells between the cuboidal outer root sheath (ORS) cells and the inner root sheath (IRS) that stretches from the lowermost bulb region to the isthmus of the follicle. Also expressed in medullated hairs. In nails, it is almost exclusively present in the nail bed (at protein level)

**KRT75 Antibody (N-term) - Protocols**

Provided below are standard protocols that you may find useful for product applications.

- [Western Blot](#)
- [Blocking Peptides](#)
- [Dot Blot](#)
- [Immunohistochemistry](#)
- [Immunofluorescence](#)
- [Immunoprecipitation](#)
- [Flow Cytometry](#)
- [Cell Culture](#)

**KRT75 Antibody (N-term) - Images**

KRT75 Antibody (N-term) (Cat. #AP16811a) western blot analysis in A375 cell line lysates (35ug/lane). This demonstrates the KRT75 antibody detected the KRT75 protein (arrow).

**KRT75 Antibody (N-term) - Background**

This gene is a member of the type II keratin family clustered on the long arm of chromosome 12. Type I and type II keratins heteropolymerize to form intermediate-sized filaments in the cytoplasm of epithelial cells. This gene is expressed in the companion layer, upper germinative matrix region of the hair follicle, and medulla of the hair shaft. The encoded protein plays an essential role in hair and nail formation. Variations in this gene have been associated with the hair disorders

pseudofolliculitis barbae (PFB) and loose anagen hair syndrome (LAHS).

#### **KRT75 Antibody (N-term) - References**

Sperling, L.C., et al. J. Cutan. Pathol. 37(2):243-248(2010)  
Liu, Z.B., et al. Tumori 95(1):53-62(2009)  
Nofech-Mozes, S., et al. Int. J. Surg. Pathol. 16(4):399-406(2008)  
Schweizer, J., et al. J. Cell Biol. 174(2):169-174(2006)  
Roh, C., et al. Physiol. Genomics 19(2):207-217(2004)