

RAVER1 Antibody (N-term)
Affinity Purified Rabbit Polyclonal Antibody (Pab)
Catalog # AP16815a**Specification**

RAVER1 Antibody (N-term) - Product Information

Application	WB,E
Primary Accession	Q8IY67
Other Accession	Q5XI28 , Q9CW46 , NP_597709.2
Reactivity	Human
Predicted	Mouse, Rat
Host	Rabbit
Clonality	Polyclonal
Isotype	Rabbit IgG
Calculated MW	63877
Antigen Region	56-83

RAVER1 Antibody (N-term) - Additional Information**Gene ID** 125950**Other Names**

Ribonucleoprotein PTB-binding 1, Protein raver-1, RAVR1, KIAA1978

Target/Specificity

This RAVR1 antibody is generated from rabbits immunized with a KLH conjugated synthetic peptide between 56-83 amino acids from the N-terminal region of human RAVR1.

Dilution

WB~~1:1000

E~~Use at an assay dependent concentration.

Format

Purified polyclonal antibody supplied in PBS with 0.09% (W/V) sodium azide. This antibody is purified through a protein A column, followed by peptide affinity purification.

Storage

Maintain refrigerated at 2-8°C for up to 2 weeks. For long term storage store at -20°C in small aliquots to prevent freeze-thaw cycles.

Precautions

RAVER1 Antibody (N-term) is for research use only and not for use in diagnostic or therapeutic procedures.

RAVER1 Antibody (N-term) - Protein Information**Name** RAVR1

Synonyms KIAA1978

Function Cooperates with PTBP1 to modulate regulated alternative splicing events. Promotes exon skipping. Cooperates with PTBP1 to modulate switching between mutually exclusive exons during maturation of the TPM1 pre-mRNA (By similarity).

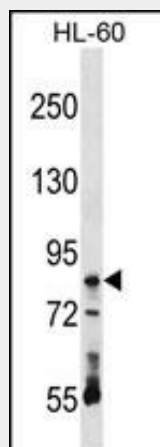
Cellular Location

Nucleus. Cytoplasm. Note=Nuclear, in perinucleolar structures. Shuttles between nucleus and cytoplasm. Cytoplasm, at focal contacts and cell-cell contacts Associated with myotubes during muscle differentiation (By similarity)

RAVER1 Antibody (N-term) - Protocols

Provided below are standard protocols that you may find useful for product applications.

- [Western Blot](#)
- [Blocking Peptides](#)
- [Dot Blot](#)
- [Immunohistochemistry](#)
- [Immunofluorescence](#)
- [Immunoprecipitation](#)
- [Flow Cytometry](#)
- [Cell Culture](#)

RAVER1 Antibody (N-term) - Images

RAVR1 Antibody (N-term) (Cat. #AP16815a) western blot analysis in HL-60 cell line lysates (35ug/lane). This demonstrates the RAVR1 antibody detected the RAVR1 protein (arrow).

RAVR1 Antibody (N-term) - Background

RAVR1 cooperates with PTBP1 to modulate regulated alternative splicing events. Promotes exon skipping. Cooperates with PTBP1 to modulate switching between mutually exclusive exons during maturation of the TPM1 pre-mRNA (By similarity).

RAVR1 Antibody (N-term) - References

- Bailey, S.D., et al. Diabetes Care 33(10):2250-2253(2010)
Han, S., et al. Hum. Immunol. 71(7):727-730(2010)
Rajaraman, P., et al. Cancer Epidemiol. Biomarkers Prev. 19(5):1356-1361(2010)

Talmud, P.J., et al. Am. J. Hum. Genet. 85(5):628-642(2009)
Lee, J.H., et al. Structure 17(6):833-842(2009)