

OSBPL1A Antibody (C-term)
Affinity Purified Rabbit Polyclonal Antibody (Pab)
Catalog # AP16819B

Specification

OSBPL1A Antibody (C-term) - Product Information

Application	WB,E
Primary Accession	O9BXW6
Other Accession	O8K4M9 , O91XL9 , NP_542164.2 , NP_060500.3
Reactivity	Human
Predicted	Mouse, Rat
Host	Rabbit
Clonality	Polyclonal
Isotype	Rabbit IgG
Calculated MW	108470
Antigen Region	736-763

OSBPL1A Antibody (C-term) - Additional Information

Gene ID 114876

Other Names

Oxysterol-binding protein-related protein 1, ORP-1, OSBP-related protein 1, OSBPL1A, ORP1, OSBP8, OSBPL1, OSBPL1B

Target/Specificity

This OSBPL1A antibody is generated from rabbits immunized with a KLH conjugated synthetic peptide between 736-763 amino acids from the C-terminal region of human OSBPL1A.

Dilution

WB~~1:1000

E~~Use at an assay dependent concentration.

Format

Purified polyclonal antibody supplied in PBS with 0.09% (W/V) sodium azide. This antibody is purified through a protein A column, followed by peptide affinity purification.

Storage

Maintain refrigerated at 2-8°C for up to 2 weeks. For long term storage store at -20°C in small aliquots to prevent freeze-thaw cycles.

Precautions

OSBPL1A Antibody (C-term) is for research use only and not for use in diagnostic or therapeutic procedures.

OSBPL1A Antibody (C-term) - Protein Information

Name OSBPL1A ([HGNC:16398](#))

Function Binds phospholipids; exhibits strong binding to phosphatidic acid and weak binding to phosphatidylinositol 3-phosphate (By similarity). Stabilizes GTP-bound RAB7A on late endosomes/lysosomes and alters functional properties of late endocytic compartments via its interaction with RAB7A (PubMed:[16176980](#)). Binds 25-hydroxycholesterol and cholesterol (PubMed:[17428193](#)).

Cellular Location

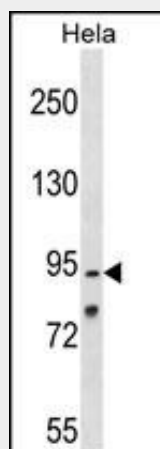
Late endosome. Note=Colocalizes with RAB7A, RAB9A and LAMP1 in late endosomes

OSBPL1A Antibody (C-term) - Protocols

Provided below are standard protocols that you may find useful for product applications.

- [Western Blot](#)
- [Blocking Peptides](#)
- [Dot Blot](#)
- [Immunohistochemistry](#)
- [Immunofluorescence](#)
- [Immunoprecipitation](#)
- [Flow Cytometry](#)
- [Cell Culture](#)

OSBPL1A Antibody (C-term) - Images



OSBPL1A Antibody (C-term) (Cat. #AP16819b) western blot analysis in HeLa cell line lysates (35ug/lane). This demonstrates the OSBPL1A antibody detected the OSBPL1A protein (arrow).

OSBPL1A Antibody (C-term) - Background

This gene encodes a member of the oxysterol-binding protein (OSBP) family, a group of intracellular lipid receptors. Most members contain an N-terminal pleckstrin homology domain and a highly conserved C-terminal OSBP-like sterol-binding domain, although some members contain only the sterol-binding domain. Transcript variants derived from alternative promoter usage and/or alternative splicing exist; they encode different isoforms.

OSBPL1A Antibody (C-term) - References

Rose, J.E., et al. Mol. Med. 16 (7-8), 247-253 (2010) :

Hsu, Y.H., et al. PLoS Genet. 6 (6), E1000977 (2010) :
Rocha, N., et al. J. Cell Biol. 185(7):1209-1225(2009)
Melzer, D., et al. PLoS Genet. 4 (5), E1000072 (2008) :
Bjornsson, H.T., et al. Genome Res. 18(5):771-779(2008)