

PLEKHF2 Antibody (Center)
Affinity Purified Rabbit Polyclonal Antibody (Pab)
Catalog # AP16820c

Specification

PLEKHF2 Antibody (Center) - Product Information

| | |
|-------------------|-----------------------------|
| Application | WB,E |
| Primary Accession | O9H8W4 |
| Other Accession | NP_078889.1 |
| Reactivity | Human |
| Host | Rabbit |
| Clonality | Polyclonal |
| Isotype | Rabbit IgG |
| Calculated MW | 27798 |
| Antigen Region | 71-98 |

PLEKHF2 Antibody (Center) - Additional Information

Gene ID 79666

Other Names

Pleckstrin homology domain-containing family F member 2, PH domain-containing family F member 2, Endoplasmic reticulum-associated apoptosis-involved protein containing PH and FYVE domains, EAPF, PH and FYVE domain-containing protein 2, Phafin-2, Phafin2, Zinc finger FYVE domain-containing protein 18, PLEKHF2, ZFYVE18

Target/Specificity

This PLEKHF2 antibody is generated from rabbits immunized with a KLH conjugated synthetic peptide between 71-98 amino acids from the Central region of human PLEKHF2.

Dilution

WB~~1:1000

Format

Purified polyclonal antibody supplied in PBS with 0.09% (W/V) sodium azide. This antibody is purified through a protein A column, followed by peptide affinity purification.

Storage

Maintain refrigerated at 2-8°C for up to 2 weeks. For long term storage store at -20°C in small aliquots to prevent freeze-thaw cycles.

Precautions

PLEKHF2 Antibody (Center) is for research use only and not for use in diagnostic or therapeutic procedures.

PLEKHF2 Antibody (Center) - Protein Information

Name PLEKHF2

Synonyms ZFYVE18

Function May play a role in early endosome fusion upstream of RAB5, hence regulating receptor trafficking and fluid-phase transport. Enhances cellular sensitivity to TNF-induced apoptosis (PubMed:[18288467](#)).

Cellular Location

Early endosome membrane; Peripheral membrane protein. Endoplasmic reticulum. Note=Colocalizes with EEA1 and RAB5 at endosomal membrane fusion hot spots (PubMed:19995552). May translocate to the endoplasmic reticulum in the early phase of apoptosis (PubMed:18288467).

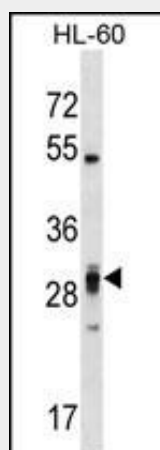
Tissue Location

Expressed in placenta, ovary and small intestine, as well as in heart and pancreas. Also expressed in peripheral blood mononuclear cells and dendritic cells.

PLEKHF2 Antibody (Center) - Protocols

Provided below are standard protocols that you may find useful for product applications.

- [Western Blot](#)
- [Blocking Peptides](#)
- [Dot Blot](#)
- [Immunohistochemistry](#)
- [Immunofluorescence](#)
- [Immunoprecipitation](#)
- [Flow Cytometry](#)
- [Cell Culture](#)

PLEKHF2 Antibody (Center) - Images

PLEKHF2 Antibody (Center) (Cat. #AP16820c) western blot analysis in HL-60 cell line lysates (35ug/lane). This demonstrates the PLEKHF2 antibody detected the PLEKHF2 protein (arrow).

PLEKHF2 Antibody (Center) - Background

PLEKHF2 (Phafin 2) is a PH and FYVE domain containing protein 2. The FYVE domain and Zinc binding domain targets proteins to membrane lipids via interaction with phosphatidylinositol 3 phosphate, PI3P. The FYVE domain and Zinc binding domain present in Fab1, YOTB, Vac1, and EEA1.

PLEKHF2 Antibody (Center) - References

Lin, W.J., et al. Biochem. Biophys. Res. Commun. 391(1):1043-1048(2010)
Li, C., et al. J. Mol. Med. 86(4):471-484(2008)
Olsen, J.V., et al. Cell 127(3):635-648(2006)