

**SEPT8 Antibody (C-term)**  
**Affinity Purified Rabbit Polyclonal Antibody (Pab)**  
**Catalog # AP16836b****Specification**

---

**SEPT8 Antibody (C-term) - Product Information**

Application	WB,E
Primary Accession	<a href="#">O92599</a>
Other Accession	<a href="#">NP_001092281.1</a> , <a href="#">NP_001092282.1</a>
Reactivity	Human
Host	Rabbit
Clonality	Polyclonal
Isotype	Rabbit IgG
Calculated MW	55756
Antigen Region	407-436

**SEPT8 Antibody (C-term) - Additional Information****Gene ID** 23176**Other Names**

Septin-8, SEPT8, KIAA0202

**Target/Specificity**

This SEPT8 antibody is generated from rabbits immunized with a KLH conjugated synthetic peptide between 407-436 amino acids from the C-terminal region of human SEPT8.

**Dilution**

WB~~1:1000

E~~Use at an assay dependent concentration.

**Format**

Purified polyclonal antibody supplied in PBS with 0.09% (W/V) sodium azide. This antibody is purified through a protein A column, followed by peptide affinity purification.

**Storage**

Maintain refrigerated at 2-8°C for up to 2 weeks. For long term storage store at -20°C in small aliquots to prevent freeze-thaw cycles.

**Precautions**

SEPT8 Antibody (C-term) is for research use only and not for use in diagnostic or therapeutic procedures.

**SEPT8 Antibody (C-term) - Protein Information****Name** SEPTIN8 ([HGNC:16511](#))**Function** Filament-forming cytoskeletal GTPase (By similarity). May play a role in platelet

secretion (PubMed:[15116257](#)). Seems to participate in the process of SNARE complex formation in synaptic vesicles (By similarity).

#### Cellular Location

Cytoplasm {ECO:0000250|UniProtKB:B0BNF1}. Cytoplasm, cytoskeleton. Synapse {ECO:0000250|UniProtKB:B0BNF1}. Cell projection, axon {ECO:0000250|UniProtKB:B0BNF1}. Cytoplasmic vesicle, secretory vesicle, synaptic vesicle membrane {ECO:0000250|UniProtKB:B0BNF1}. Presynapse {ECO:0000250|UniProtKB:B0BNF1}. Note=Expressed in axons of immature neurons, localizes to synapses in mature neurons (By similarity). In platelets, found in areas surrounding alpha-granules (PubMed:15116257) {ECO:0000250|UniProtKB:B0BNF1, ECO:0000269|PubMed:15116257}

#### Tissue Location

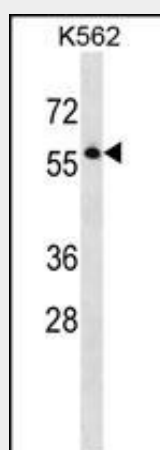
Widely expressed, including in brain, heart and platelets; most abundant in aorta. Isoform 2 is expressed at low levels in specific brain areas, such as occipital pole, frontal lobe, temporal lobe and putamen. Isoform 1 and 3 are highly expressed in specific brain areas, such as occipital pole, frontal lobe, temporal lobe and putamen. Isoform 2 is highly expressed in prostate, testis and ovary Isoform 1 and isoform 3 are expressed at low levels in prostate, testis and ovary.

### SEPT8 Antibody (C-term) - Protocols

Provided below are standard protocols that you may find useful for product applications.

- [Western Blot](#)
- [Blocking Peptides](#)
- [Dot Blot](#)
- [Immunohistochemistry](#)
- [Immunofluorescence](#)
- [Immunoprecipitation](#)
- [Flow Cytometry](#)
- [Cell Culture](#)

### SEPT8 Antibody (C-term) - Images



SEPT8 Antibody (C-term) (Cat. #AP16836b) western blot analysis in K562 cell line lysates (35ug/lane). This demonstrates the SEPT8 antibody detected the SEPT8 protein (arrow).

### SEPT8 Antibody (C-term) - Background

SEPT8 is a member of the highly conserved septin family.

Septins are 40- to 60-kD GTPases that assemble as filamentous scaffolds. They are involved in the organization of submembranous structures, in neuronal polarity, and in vesicle trafficking (Blaser et al., 2003 [PubMed 12909369]).

#### **SEPT8 Antibody (C-term) - References**

Souza, T.A., et al. Protein J. 29(5):328-335(2010)  
Ridruechai, C., et al. Genes Immun. 11(5):416-422(2010)  
Rose, J.E., et al. Mol. Med. 16 (7-8), 247-253 (2010) :  
Xin, X., et al. J. Histochem. Cytochem. 55(11):1089-1094(2007)  
Steels, J.D., et al. Cell Motil. Cytoskeleton 64(10):794-807(2007)