

ESYT1 Antibody (C-term)
Affinity Purified Rabbit Polyclonal Antibody (Pab)
Catalog # AP16840b**Specification**

ESYT1 Antibody (C-term) - Product Information

Application	WB,E
Primary Accession	O9BSJ8
Other Accession	NP_056107.1 , NP_001171725.1
Reactivity	Human
Host	Rabbit
Clonality	Polyclonal
Isotype	Rabbit IgG
Calculated MW	122856
Antigen Region	1002-1031

ESYT1 Antibody (C-term) - Additional Information**Gene ID** 23344**Other Names**

Extended synaptotagmin-1, E-Syt1, Membrane-bound C2 domain-containing protein, ESYT1, FAM62A, KIAA0747, MBC2

Target/Specificity

This ESYT1 antibody is generated from rabbits immunized with a KLH conjugated synthetic peptide between 1002-1031 amino acids from the C-terminal region of human ESYT1.

Dilution

WB~~1:1000

E~~Use at an assay dependent concentration.

Format

Purified polyclonal antibody supplied in PBS with 0.09% (W/V) sodium azide. This antibody is purified through a protein A column, followed by peptide affinity purification.

Storage

Maintain refrigerated at 2-8°C for up to 2 weeks. For long term storage store at -20°C in small aliquots to prevent freeze-thaw cycles.

Precautions

ESYT1 Antibody (C-term) is for research use only and not for use in diagnostic or therapeutic procedures.

ESYT1 Antibody (C-term) - Protein Information**Name** ESYT1 ([HGNC:29534](#))

Synonyms FAM62A, KIAA0747, MBC2

Function Binds calcium (via the C2 domains) and translocates to sites of contact between the endoplasmic reticulum and the cell membrane in response to increased cytosolic calcium levels (PubMed:[23791178](#), PubMed:[24183667](#)). Helps tether the endoplasmic reticulum to the cell membrane and promotes the formation of appositions between the endoplasmic reticulum and the cell membrane (PubMed:[24183667](#)). Acts as an inhibitor of ADGRD1 G-protein-coupled receptor activity in absence of cytosolic calcium (PubMed:[38758649](#)). Binds glycerophospholipids in a barrel-like domain and may play a role in cellular lipid transport (By similarity).

Cellular Location

Endoplasmic reticulum membrane; Multi-pass membrane protein. Cell membrane; Peripheral membrane protein. Note=Localizes primarily to the endoplasmic reticulum (PubMed:29469807). Recruited to sites of contact between the endoplasmic reticulum and the cell membrane in response to increased cytosolic calcium levels (PubMed:22250200, PubMed:29469807).

Tissue Location

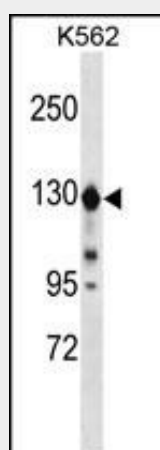
Widely expressed..

ESYT1 Antibody (C-term) - Protocols

Provided below are standard protocols that you may find useful for product applications.

- [Western Blot](#)
- [Blocking Peptides](#)
- [Dot Blot](#)
- [Immunohistochemistry](#)
- [Immunofluorescence](#)
- [Immunoprecipitation](#)
- [Flow Cytometry](#)
- [Cell Culture](#)

ESYT1 Antibody (C-term) - Images



ESYT1 Antibody (C-term) (Cat. #AP16840b) western blot analysis in K562 cell line lysates (35ug/lane). This demonstrates the ESYT1 antibody detected the ESYT1 protein (arrow).

ESYT1 Antibody (C-term) - Background

ESYT1 may play a role as calcium-regulated intrinsic membrane protein (By similarity).

ESYT1 Antibody (C-term) - References

Craxton, M. BMC Genomics 8, 259 (2007) :

Laveder, P., et al. Nucleic Acids Res. 30 (9), E38 (2002) :

Morris, N.J., et al. Biochim. Biophys. Acta 1431(2):525-530(1999)