

CCL7 Antibody (Center)
Affinity Purified Rabbit Polyclonal Antibody (Pab)
Catalog # AP16860c**Specification**

CCL7 Antibody (Center) - Product Information

Application	WB,E
Primary Accession	P80098
Other Accession	NP_006264.2
Reactivity	Human
Host	Rabbit
Clonality	Polyclonal
Isotype	Rabbit IgG
Calculated MW	11200
Antigen Region	25-54

CCL7 Antibody (Center) - Additional Information**Gene ID** 6354**Other Names**

C-C motif chemokine 7, Monocyte chemoattractant protein 3, Monocyte chemotactic protein 3, MCP-3, NC28, Small-inducible cytokine A7, CCL7, MCP3, SCYA6, SCYA7

Target/Specificity

This CCL7 antibody is generated from rabbits immunized with a KLH conjugated synthetic peptide between 25-54 amino acids from the Central region of human CCL7.

Dilution

WB~~1:1000

E~~Use at an assay dependent concentration.

Format

Purified polyclonal antibody supplied in PBS with 0.09% (W/V) sodium azide. This antibody is purified through a protein A column, followed by peptide affinity purification.

Storage

Maintain refrigerated at 2-8°C for up to 2 weeks. For long term storage store at -20°C in small aliquots to prevent freeze-thaw cycles.

Precautions

CCL7 Antibody (Center) is for research use only and not for use in diagnostic or therapeutic procedures.

CCL7 Antibody (Center) - Protein Information**Name** CCL7

Synonyms MCP3, SCYA6, SCYA7

Function Chemotactic factor that attracts monocytes and eosinophils, but not neutrophils. Augments monocyte anti-tumor activity. Also induces the release of gelatinase B. This protein can bind heparin. Binds to CCR1, CCR2 and CCR3.

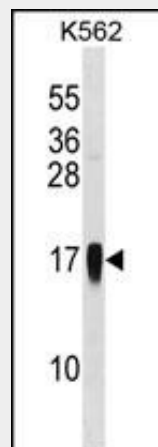
Cellular Location
Secreted.

CCL7 Antibody (Center) - Protocols

Provided below are standard protocols that you may find useful for product applications.

- [Western Blot](#)
- [Blocking Peptides](#)
- [Dot Blot](#)
- [Immunohistochemistry](#)
- [Immunofluorescence](#)
- [Immunoprecipitation](#)
- [Flow Cytometry](#)
- [Cell Culture](#)

CCL7 Antibody (Center) - Images



CCL7 Antibody (Center) (Cat. #AP16860c) western blot analysis in K562 cell line lysates (35ug/lane). This demonstrates the CCL7 antibody detected the CCL7 protein (arrow).

CCL7 Antibody (Center) - Background

This gene encodes monocyte chemotactic protein 3, a secreted chemokine which attracts macrophages during inflammation and metastasis. It is a member of the C-C subfamily of chemokines which are characterized by having two adjacent cysteine residues. The protein is an in vivo substrate of matrix metalloproteinase 2, an enzyme which degrades components of the extracellular matrix. This gene is part of a cluster of C-C chemokine family members on chromosome 17q.

CCL7 Antibody (Center) - References

McGovern, D.P., et al. Hum. Mol. Genet. 19(17):3468-3476(2010)
Han, S., et al. Hum. Immunol. 71(7):727-730(2010)
Schuurhof, A., et al. Pediatr. Pulmonol. 45(6):608-613(2010)
Rajaraman, P., et al. Cancer Epidemiol. Biomarkers Prev. 19(5):1356-1361(2010)
Johnatty, S.E., et al. PLoS Genet. 6 (7), E1001016 (2010) :