

**SEPT1 Antibody (N-term)**  
**Affinity Purified Rabbit Polyclonal Antibody (Pab)**  
**Catalog # AP16865a****Specification**

---

**SEPT1 Antibody (N-term) - Product Information**

|                   |                             |
|-------------------|-----------------------------|
| Application       | WB,E                        |
| Primary Accession | <a href="#">Q8WYJ6</a>      |
| Other Accession   | <a href="#">NP_443070.1</a> |
| Reactivity        | Human                       |
| Host              | Rabbit                      |
| Clonality         | Polyclonal                  |
| Isotype           | Rabbit IgG                  |
| Calculated MW     | 42386                       |
| Antigen Region    | 54-82                       |

**SEPT1 Antibody (N-term) - Additional Information****Gene ID** 1731**Other Names**

Septin-1, LARP, Peanut-like protein 3, Serologically defined breast cancer antigen NY-BR-24, SEPT1, DIFF6, PNUTL3

**Target/Specificity**

This SEPT1 antibody is generated from rabbits immunized with a KLH conjugated synthetic peptide between 54-82 amino acids from the N-terminal region of human SEPT1.

**Dilution**

WB~~1:1000

E~~Use at an assay dependent concentration.

**Format**

Purified polyclonal antibody supplied in PBS with 0.09% (W/V) sodium azide. This antibody is purified through a protein A column, followed by peptide affinity purification.

**Storage**

Maintain refrigerated at 2-8°C for up to 2 weeks. For long term storage store at -20°C in small aliquots to prevent freeze-thaw cycles.

**Precautions**

SEPT1 Antibody (N-term) is for research use only and not for use in diagnostic or therapeutic procedures.

**SEPT1 Antibody (N-term) - Protein Information****Name** SEPTIN1 ([HGNC:2879](#))

**Synonyms** DIFF6, PNUTL3, SEPT1

**Function** Filament-forming cytoskeletal GTPase (By similarity). May play a role in cytokinesis (Potential).

**Cellular Location**

Cytoplasm. Cytoplasm, cytoskeleton. Cytoplasm, cytoskeleton, microtubule organizing center, centrosome. Midbody. Note=Remains at the centrosomes and the nearby microtubules throughout mitosis. Localizes to the midbody during cytokinesis

**Tissue Location**

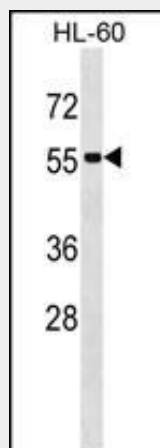
Expressed at high levels in lymphoid and hematopoietic tissues.

**SEPT1 Antibody (N-term) - Protocols**

Provided below are standard protocols that you may find useful for product applications.

- [Western Blot](#)
- [Blocking Peptides](#)
- [Dot Blot](#)
- [Immunohistochemistry](#)
- [Immunofluorescence](#)
- [Immunoprecipitation](#)
- [Flow Cytometry](#)
- [Cell Culture](#)

**SEPT1 Antibody (N-term) - Images**



SEPT1 Antibody (N-term) (Cat. #AP16865a) western blot analysis in HL-60 cell line lysates (35ug/lane). This demonstrates the SEPT1 antibody detected the SEPT1 protein (arrow).

**SEPT1 Antibody (N-term) - Background**

This gene is a member of the septin family of GTPases. Members of this family are required for cytokinesis. This gene encodes a protein associated with the tau-based paired helical filament core, and may contribute to the formation of neurofibrillary tangles in Alzheimer's disease. [provided by RefSeq].

**SEPT1 Antibody (N-term) - References**

Kato, Y., et al. Int. J. Oncol. 31(5):1021-1028(2007)  
Steels, J.D., et al. Cell Motil. Cytoskeleton 64(10):794-807(2007)  
Qi, M., et al. Biochem. Biophys. Res. Commun. 336(3):994-1000(2005)  
Qi, M., et al. Biochem. Biophys. Res. Commun. 336(3):994-1000(2005)  
Scanlan, M.J., et al. Cancer Immun. 1, 4 (2001) :