

**SDC4 Antibody (Center)**  
**Affinity Purified Rabbit Polyclonal Antibody (Pab)**  
**Catalog # AP16869c**

**Specification**

---

**SDC4 Antibody (Center) - Product Information**

Application	WB,E
Primary Accession	<a href="#">P31431</a>
Other Accession	<a href="#">NP_002990.2</a>
Reactivity	Human
Host	Rabbit
Clonality	Polyclonal
Isotype	Rabbit IgG
Calculated MW	21642
Antigen Region	98-127

**SDC4 Antibody (Center) - Additional Information**

**Gene ID** 6385

**Other Names**

Syndecan-4, SYND4, Amphiglycan, Ryudocan core protein, SDC4

**Target/Specificity**

This SDC4 antibody is generated from rabbits immunized with a KLH conjugated synthetic peptide between 98-127 amino acids from the Central region of human SDC4.

**Dilution**

WB~~1:1000

E~~Use at an assay dependent concentration.

**Format**

Purified polyclonal antibody supplied in PBS with 0.09% (W/V) sodium azide. This antibody is purified through a protein A column, followed by peptide affinity purification.

**Storage**

Maintain refrigerated at 2-8°C for up to 2 weeks. For long term storage store at -20°C in small aliquots to prevent freeze-thaw cycles.

**Precautions**

SDC4 Antibody (Center) is for research use only and not for use in diagnostic or therapeutic procedures.

**SDC4 Antibody (Center) - Protein Information**

**Name** SDC4 ([HGNC:10661](#))

**Function** Cell surface proteoglycan which regulates exosome biogenesis in concert with SDCBP

and PDCD6IP (PubMed:[22660413](#)).

#### Cellular Location

[Isoform 1]: Membrane; Single-pass type I membrane protein. Secreted. Note=Shedding of the ectodomain produces a soluble form.

#### Tissue Location

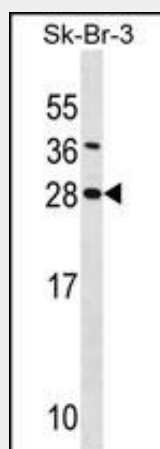
Detected in fibroblasts (at protein level) (PubMed:1500433, PubMed:36213313). Also expressed in epithelial cells (PubMed:1500433).

### SDC4 Antibody (Center) - Protocols

Provided below are standard protocols that you may find useful for product applications.

- [Western Blot](#)
- [Blocking Peptides](#)
- [Dot Blot](#)
- [Immunohistochemistry](#)
- [Immunofluorescence](#)
- [Immunoprecipitation](#)
- [Flow Cytometry](#)
- [Cell Culture](#)

### SDC4 Antibody (Center) - Images



SDC4 Antibody (Center) (Cat. #AP16869c) western blot analysis in SK-BR-3 cell line lysates (35ug/lane). This demonstrates the SDC4 antibody detected the SDC4 protein (arrow).

### SDC4 Antibody (Center) - Background

The protein encoded by this gene is a transmembrane (type I) heparan sulfate proteoglycan that functions as a receptor in intracellular signaling. The encoded protein is found as a homodimer and is a member of the syndecan proteoglycan family. This gene is found on chromosome 20, while a pseudogene has been found on chromosome 22.

### SDC4 Antibody (Center) - References

Buhligen, J., et al. J. Cell. Physiol. 225(3):905-914(2010)

Bailey, S.D., et al. Diabetes Care 33(10):2250-2253(2010)  
Carvallo, L., et al. J. Biol. Chem. 285(38):29546-29555(2010)  
Wang, Y., et al. J. Hum. Genet. 55(8):490-494(2010)  
Hallberg, G., et al. Reprod. Biol. Endocrinol. 8, 35 (2010) :