

DCDC2 Antibody (Center)
Affinity Purified Rabbit Polyclonal Antibody (Pab)
Catalog # AP16874c**Specification**

DCDC2 Antibody (Center) - Product Information

Application	WB,E
Primary Accession	O9UHG0
Other Accession	D3ZR10 , Q5DU00 , NP_001182539.1 , NP_057440.2
Reactivity	Human
Predicted	Mouse, Rat
Host	Rabbit
Clonality	Polyclonal
Isotype	Rabbit IgG
Calculated MW	52834
Antigen Region	306-334

DCDC2 Antibody (Center) - Additional Information**Gene ID** 51473**Other Names**

Doublecortin domain-containing protein 2, Protein RU2S, DCDC2, KIAA1154, RU2

Target/Specificity

This DCDC2 antibody is generated from rabbits immunized with a KLH conjugated synthetic peptide between 306-334 amino acids from the Central region of human DCDC2.

Dilution

WB~~1:1000

Format

Purified polyclonal antibody supplied in PBS with 0.09% (W/V) sodium azide. This antibody is purified through a protein A column, followed by peptide affinity purification.

Storage

Maintain refrigerated at 2-8°C for up to 2 weeks. For long term storage store at -20°C in small aliquots to prevent freeze-thaw cycles.

Precautions

DCDC2 Antibody (Center) is for research use only and not for use in diagnostic or therapeutic procedures.

DCDC2 Antibody (Center) - Protein Information**Name** DCDC2

Synonyms KIAA1154, RU2

Function Protein that plays a role in the inhibition of canonical Wnt signaling pathway (PubMed:[25557784](#)). May be involved in neuronal migration during development of the cerebral neocortex (By similarity). Involved in the control of ciliogenesis and ciliary length (PubMed:[25601850](#), PubMed:[27319779](#)).

Cellular Location

Cell projection, cilium. Cytoplasm, cytoskeleton, cilium axoneme. Cell projection, kinocilium {ECO:0000250|UniProtKB:D3ZR10}. Cytoplasm, cytoskeleton {ECO:0000250|UniProtKB:D3ZR10}. Note=Localizes to the ciliary axoneme and to mitotic spindle fibers in a cell-cycle-dependent manner

Tissue Location

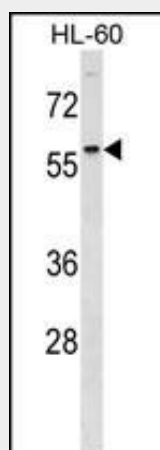
Ubiquitously expressed. In brain, highly expressed in the entorhinal cortex, inferior temporal cortex, medial temporal cortex, hypothalamus, amygdala and hippocampus (PubMed:10601354, PubMed:16278297). Expressed in liver by cholangiocytes, the epithelial cells of the bile ducts (at protein level) (PubMed:27319779)

DCDC2 Antibody (Center) - Protocols

Provided below are standard protocols that you may find useful for product applications.

- [Western Blot](#)
- [Blocking Peptides](#)
- [Dot Blot](#)
- [Immunohistochemistry](#)
- [Immunofluorescence](#)
- [Immunoprecipitation](#)
- [Flow Cytometry](#)
- [Cell Culture](#)

DCDC2 Antibody (Center) - Images



DCDC2 Antibody (Center) (Cat. #AP16874c) western blot analysis in HL-60 cell line lysates (35ug/lane). This demonstrates the DCDC2 antibody detected the DCDC2 protein (arrow).

DCDC2 Antibody (Center) - Background

This gene encodes a protein with two doublecortin peptide

domains. This domain has been demonstrated to bind tubulin and enhance microtubule polymerization. Mutations in this gene have been associated with Reading Disability (RD), also referred to as developmental dyslexia.

DCDC2 Antibody (Center) - References

Couto, J.M., et al. Am. J. Med. Genet. B Neuropsychiatr. Genet. 153B (2), 447-462 (2010) :
Meda, S.A., et al. Neuroimage (2009) In press :
Couto, J.M., et al. Biol. Psychiatry 66(4):368-375(2009)
Wilcke, A., et al. Ann Dyslexia 59(1):1-11(2009)
Meda, S.A., et al. Brain Imaging Behav 2(1):21-26(2008)