

Mouse Camkk1 Antibody (C-term)
Affinity Purified Rabbit Polyclonal Antibody (Pab)
Catalog # AP16901b

Specification

Mouse Camkk1 Antibody (C-term) - Product Information

| | |
|-------------------|-----------------------------|
| Application | WB,E |
| Primary Accession | Q8VBY2 |
| Other Accession | NP_061371.2 |
| Reactivity | Human, Mouse |
| Host | Rabbit |
| Clonality | Polyclonal |
| Isotype | Rabbit IgG |
| Calculated MW | 55838 |
| Antigen Region | 341-368 |

Mouse Camkk1 Antibody (C-term) - Additional Information

Gene ID 55984

Other Names

Calcium/calmodulin-dependent protein kinase kinase 1, CaM-KK 1, CaM-kinase kinase 1, CaMKK 1, CaM-kinase IV kinase, Calcium/calmodulin-dependent protein kinase kinase alpha, CaM-KK alpha, CaM-kinase kinase alpha, CaMKK alpha, Camkk1, Camkk

Target/Specificity

This Mouse Camkk1 antibody is generated from rabbits immunized with a KLH conjugated synthetic peptide between 341-368 amino acids from the C-terminal region of mouse Camkk1.

Dilution

WB~~1:1000

Format

Purified polyclonal antibody supplied in PBS with 0.09% (W/V) sodium azide. This antibody is purified through a protein A column, followed by peptide affinity purification.

Storage

Maintain refrigerated at 2-8°C for up to 2 weeks. For long term storage store at -20°C in small aliquots to prevent freeze-thaw cycles.

Precautions

Mouse Camkk1 Antibody (C-term) is for research use only and not for use in diagnostic or therapeutic procedures.

Mouse Camkk1 Antibody (C-term) - Protein Information

Name Camkk1

Synonyms Camkk

Function Calcium/calmodulin-dependent protein kinase that belongs to a proposed calcium-triggered signaling cascade involved in a number of cellular processes. Phosphorylates CAMK1, CAMK1D, CAMK1G and CAMK4. Involved in regulating cell apoptosis. Promotes cell survival by phosphorylating AKT1/PKB that inhibits pro-apoptotic BAD/Bcl2- antagonist of cell death.

Cellular Location

Cytoplasm. Nucleus.

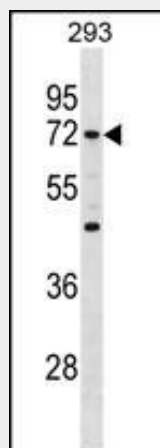
Tissue Location

Widely expressed. Differentially expressed in various brain regions.

Mouse Camkk1 Antibody (C-term) - Protocols

Provided below are standard protocols that you may find useful for product applications.

- [Western Blot](#)
- [Blocking Peptides](#)
- [Dot Blot](#)
- [Immunohistochemistry](#)
- [Immunofluorescence](#)
- [Immunoprecipitation](#)
- [Flow Cytometry](#)
- [Cell Culture](#)

Mouse Camkk1 Antibody (C-term) - Images

Mouse Camkk1 Antibody (C-term) (Cat. #AP16901b) western blot analysis in 293 cell line lysates (35ug/lane). This demonstrates the Camkk1 antibody detected the Camkk1 protein (arrow).

Mouse Camkk1 Antibody (C-term) - Background

Calcium/calmodulin-dependent protein kinase that belongs to a proposed calcium-triggered signaling cascade involved in a number of cellular processes. Phosphorylates CAMK1, CAMK1D, CAMK1G and CAMK4. Involved in regulating cell apoptosis. Promotes cell survival by phosphorylating AKT1/PKB that inhibits pro-apoptotic BAD/Bcl2-antagonist of cell death.

Mouse Camkk1 Antibody (C-term) - References

Pereira, J.D., et al. Proc. Natl. Acad. Sci. U.S.A. 107(36):15957-15962(2010)
Jin, X.L., et al. Biol. Reprod. 82(2):459-468(2010)
Zhou, L., et al. J. Biol. Chem. 284(33):22426-22435(2009)
Sueyoshi, N., et al. Arch. Biochem. Biophys. 488(1):48-59(2009)
Kaneko, K., et al. Biochim. Biophys. Acta 1790(1):71-79(2009)