

DUSP12 Antibody (Center)
Affinity Purified Rabbit Polyclonal Antibody (Pab)
Catalog # AP16903c

Specification

DUSP12 Antibody (Center) - Product Information

Application	WB,E
Primary Accession	O9UNI6
Other Accession	NP_009171.1
Reactivity	Human, Mouse
Host	Rabbit
Clonality	Polyclonal
Isotype	Rabbit IgG
Calculated MW	37687
Antigen Region	162-191

DUSP12 Antibody (Center) - Additional Information

Gene ID 11266

Other Names

Dual specificity protein phosphatase 12, Dual specificity tyrosine phosphatase YVH1, DUSP12

Target/Specificity

This DUSP12 antibody is generated from rabbits immunized with a KLH conjugated synthetic peptide between 162-191 amino acids from the Central region of human DUSP12.

Dilution

WB~~1:1000

Format

Purified polyclonal antibody supplied in PBS with 0.09% (W/V) sodium azide. This antibody is purified through a protein A column, followed by peptide affinity purification.

Storage

Maintain refrigerated at 2-8°C for up to 2 weeks. For long term storage store at -20°C in small aliquots to prevent freeze-thaw cycles.

Precautions

DUSP12 Antibody (Center) is for research use only and not for use in diagnostic or therapeutic procedures.

DUSP12 Antibody (Center) - Protein Information

Name DUSP12

Function Dual specificity phosphatase; can dephosphorylate both phosphotyrosine and phosphoserine or phosphothreonine residues. Can dephosphorylate glucokinase (in vitro) (By

similarity). Has phosphatase activity with the synthetic substrate 6,8-difluoro-4-methylumbelliferyl phosphate and other in vitro substrates (PubMed:[10446167](#), PubMed:[24531476](#)).

Cellular Location

Nucleus. Cytoplasm, cytosol. Note=Primarily nuclear. Detected in a mesh-like pattern in the cytosol.

Tissue Location

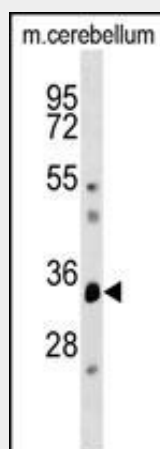
Ubiquitous, highest expression in spleen, testis, ovary, and peripheral blood leukocytes and lower expression in liver and lung

DUSP12 Antibody (Center) - Protocols

Provided below are standard protocols that you may find useful for product applications.

- [Western Blot](#)
- [Blocking Peptides](#)
- [Dot Blot](#)
- [Immunohistochemistry](#)
- [Immunofluorescence](#)
- [Immunoprecipitation](#)
- [Flow Cytometry](#)
- [Cell Culture](#)

DUSP12 Antibody (Center) - Images



DUSP12 Antibody (Center) (Cat. #AP16903c) western blot analysis in mouse cerebellum tissue lysates (35ug/lane). This demonstrates the DUSP12 antibody detected the DUSP12 protein (arrow).

DUSP12 Antibody (Center) - Background

The protein encoded by this gene is a member of the dual specificity protein phosphatase subfamily. These phosphatases inactivate their target kinases by dephosphorylating both the phosphoserine/threonine and phosphotyrosine residues. They negatively regulate members of the mitogen-activated protein (MAP) kinase superfamily (MAPK/ERK, SAPK/JNK, p38), which is associated with cellular proliferation and differentiation. Different members of the family of dual specificity phosphatases show distinct substrate specificities for various MAP kinases, different tissue

distribution and subcellular localization, and different modes of inducibility of their expression by extracellular stimuli. This gene product is the human ortholog of the *Saccharomyces cerevisiae* YVH1 protein tyrosine phosphatase. It is localized predominantly in the nucleus, and is novel in that it contains, and is regulated by a zinc finger domain.

DUSP12 Antibody (Center) - References

Biernacki, M.A., et al. Cancer Res. 70(3):906-915(2010)
Bonham, C.A., et al. J. Biol. Chem. 284(34):22853-22864(2009)
Sharda, P.R., et al. Biochem. J. 418(2):391-401(2009)
Gao, F., et al. Zhonghua Yi Xue Za Zhi 88(32):2250-2253(2008)
Hasstedt, S.J., et al. Ann. Hum. Genet. 72 (PT 2), 163-169 (2008) :