

TSSC1 Antibody (C-term)
Affinity Purified Rabbit Polyclonal Antibody (Pab)
Catalog # AP16907b**Specification**

TSSC1 Antibody (C-term) - Product Information

Application	WB,E
Primary Accession	Q53HC9
Other Accession	Q5PPK9 , Q8K0G5 , Q4R571 , NP_003301.1
Reactivity	Human
Predicted	Monkey, Mouse, Rat
Host	Rabbit
Clonality	Polyclonal
Isotype	Rabbit IgG
Calculated MW	43603
Antigen Region	319-348

TSSC1 Antibody (C-term) - Additional Information**Gene ID** 7260**Other Names**

Protein TSSC1, Tumor-suppressing STF cDNA 1 protein, Tumor-suppressing subchromosomal transferable fragment candidate gene 1 protein, TSSC1

Target/Specificity

This TSSC1 antibody is generated from rabbits immunized with a KLH conjugated synthetic peptide between 319-348 amino acids from the C-terminal region of human TSSC1.

Dilution

WB~~1:1000

E~~Use at an assay dependent concentration.

Format

Purified polyclonal antibody supplied in PBS with 0.09% (W/V) sodium azide. This antibody is purified through a protein A column, followed by peptide affinity purification.

Storage

Maintain refrigerated at 2-8°C for up to 2 weeks. For long term storage store at -20°C in small aliquots to prevent freeze-thaw cycles.

Precautions

TSSC1 Antibody (C-term) is for research use only and not for use in diagnostic or therapeutic procedures.

TSSC1 Antibody (C-term) - Protein Information**Name** EIPR1 ([HGNC:12383](#))

Function Acts as a component of endosomal retrieval machinery that is involved in protein transport from early endosomes to either recycling endosomes or the trans-Golgi network (PubMed:[27440922](#)). Mediates the recruitment of Golgi-associated retrograde protein (GARP) complex to the trans-Golgi network and controls early endosome-to-Golgi transport of internalized protein (PubMed:[27440922](#)). Promotes the recycling of internalized transferrin receptor (TFRC) to the plasma membrane through interaction with endosome-associated recycling protein (EARP) complex (PubMed:[27440922](#)). Controls proper insulin distribution and secretion, and retention of cargo in mature dense core vesicles (By similarity). Required for the stability of the endosome-associated retrograde protein (EARP) complex subunits and for proper localization and association of EARP with membranes (By similarity).

Cellular Location

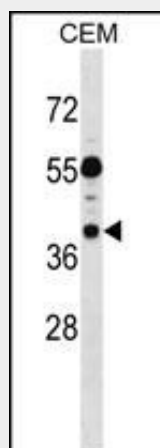
Golgi apparatus, trans-Golgi network

TSSC1 Antibody (C-term) - Protocols

Provided below are standard protocols that you may find useful for product applications.

- [Western Blot](#)
- [Blocking Peptides](#)
- [Dot Blot](#)
- [Immunohistochemistry](#)
- [Immunofluorescence](#)
- [Immunoprecipitation](#)
- [Flow Cytometry](#)
- [Cell Culture](#)

TSSC1 Antibody (C-term) - Images



TSSC1 Antibody (C-term) (Cat. #AP16907b) western blot analysis in CEM cell line lysates (35ug/lane). This demonstrates the TSSC1 antibody detected the TSSC1 protein (arrow).

TSSC1 Antibody (C-term) - Background

This gene has been reported in PMID 9403053 as one of several tumor-suppressing subtransferable fragments located in the imprinted gene domain of 11p15.5, an important tumor-suppressor gene region. Alterations in this region have been associated with the Beckwith-Wiedemann syndrome, Wilms tumor, rhabdomyosarcoma, adrenocortical carcinoma, and lung, ovarian, and breast cancer.

Alignment of this gene to genomic sequence data suggests that this gene resides on chromosome 2 rather than chromosome 11. [provided by RefSeq].

TSSC1 Antibody (C-term) - References

Ewing, R.M., et al. Mol. Syst. Biol. 3, 89 (2007) :
Hillier, L.W., et al. Nature 434(7034):724-731(2005)
Scelfo, R., et al. Cytogenet. Cell Genet. 83 (1-2), 52-53 (1998) :
Hu, R.J., et al. Genomics 46(1):9-17(1997)