

HKDC1 Antibody (C-term)
Affinity Purified Rabbit Polyclonal Antibody (Pab)
Catalog # AP16912B**Specification**

HKDC1 Antibody (C-term) - Product Information

Application	WB,E
Primary Accession	Q2TB90
Other Accession	NP_079406.3
Reactivity	Human
Host	Rabbit
Clonality	Polyclonal
Isotype	Rabbit IgG
Calculated MW	102545
Antigen Region	825-853

HKDC1 Antibody (C-term) - Additional Information**Gene ID** 80201**Other Names**

Putative hexokinase HKDC1, Hexokinase domain-containing protein 1, HKDC1

Target/Specificity

This HKDC1 antibody is generated from rabbits immunized with a KLH conjugated synthetic peptide between 825-853 amino acids from the C-terminal region of human HKDC1.

Dilution

WB~~1:1000

Format

Purified polyclonal antibody supplied in PBS with 0.09% (W/V) sodium azide. This antibody is purified through a protein A column, followed by peptide affinity purification.

Storage

Maintain refrigerated at 2-8°C for up to 2 weeks. For long term storage store at -20°C in small aliquots to prevent freeze-thaw cycles.

Precautions

HKDC1 Antibody (C-term) is for research use only and not for use in diagnostic or therapeutic procedures.

HKDC1 Antibody (C-term) - Protein Information**Name** HKDC1 ([HGNC:23302](#))**Function** Catalyzes the phosphorylation of hexose to hexose 6- phosphate, although at very low level compared to other hexokinases (PubMed:[30517626](#)). Has low glucose phosphorylating

activity compared to other hexokinases (PubMed:[30517626](#)). Involved in glucose homeostasis and hepatic lipid accumulation. Required to maintain whole-body glucose homeostasis during pregnancy; however additional evidences are required to confirm this role (By similarity).

Cellular Location

Cytoplasm. Mitochondrion membrane; Peripheral membrane protein. Photoreceptor inner segment {ECO:0000250|UniProtKB:Q91W97}. Note=The mitochondrial-binding peptide (MBP) region promotes association with the mitochondrion

Tissue Location

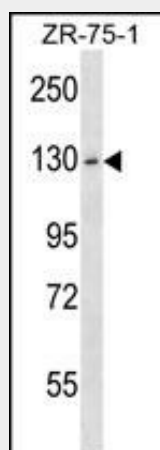
Widely expressed (PubMed:27459389, PubMed:29401404). Highly expressed in the brush border, surface epithelium and the myenteric plexus of the small and large intestines; the acinar centrocytes and interlobular ducts of the pancreas; and the alveolar macrophages in the lungs (at protein level) (PubMed:29401404) Present at moderate level in the thyroid follicular epithelium (at protein level) (PubMed:29401404).

HKDC1 Antibody (C-term) - Protocols

Provided below are standard protocols that you may find useful for product applications.

- [Western Blot](#)
- [Blocking Peptides](#)
- [Dot Blot](#)
- [Immunohistochemistry](#)
- [Immunofluorescence](#)
- [Immunoprecipitation](#)
- [Flow Cytometry](#)
- [Cell Culture](#)

HKDC1 Antibody (C-term) - Images



HKDC1 Antibody (C-term) (Cat. #AP16912b) western blot analysis in ZR-75-1 cell line lysates (35ug/lane). This demonstrates the HKDC1 antibody detected the HKDC1 protein (arrow).

HKDC1 Antibody (C-term) - References

Neale, B.M., et al. J Am Acad Child Adolesc Psychiatry 49(9):906-920(2010)
Rose, J.E., et al. Mol. Med. 16 (7-8), 247-253 (2010) :
Grupe, A., et al. Am. J. Hum. Genet. 78(1):78-88(2006)