

POLS Antibody (Center)
Affinity Purified Rabbit Polyclonal Antibody (Pab)
Catalog # AP16915C

Specification

POLS Antibody (Center) - Product Information

Application	WB,E
Primary Accession	Q5XG87
Other Accession	Q6PB75 , NP_008930.1 , NP_001165276.1
Reactivity	Human
Predicted	Mouse
Host	Rabbit
Clonality	Polyclonal
Isotype	Rabbit IgG
Calculated MW	84650
Antigen Region	152-180

POLS Antibody (Center) - Additional Information

Gene ID 11044

Other Names

Non-canonical poly(A) RNA polymerase PAPD7, DNA polymerase sigma, LAK-1, PAP-associated domain-containing protein 7, TRAMP-like complex polyadenylate polymerase, Terminal uridylyltransferase 5, TUTase 5, Topoisomerase-related function protein 4-1, TRF4-1, PAPD7, POLS, TRF4

Target/Specificity

This POLS antibody is generated from rabbits immunized with a KLH conjugated synthetic peptide between 152-180 amino acids from the Central region of human POLS.

Dilution

WB~~1:1000

E~~Use at an assay dependent concentration.

Format

Purified polyclonal antibody supplied in PBS with 0.09% (W/V) sodium azide. This antibody is purified through a protein A column, followed by peptide affinity purification.

Storage

Maintain refrigerated at 2-8°C for up to 2 weeks. For long term storage store at -20°C in small aliquots to prevent freeze-thaw cycles.

Precautions

POLS Antibody (Center) is for research use only and not for use in diagnostic or therapeutic procedures.

POLS Antibody (Center) - Protein Information

Name TENT4A ([HGNC:16705](#))

Function Terminal nucleotidyltransferase that catalyzes preferentially the transfer of ATP and GTP on RNA 3' poly(A) tail creating a heterogeneous 3' poly(A) tail leading to mRNAs stabilization by protecting mRNAs from active deadenylation (PubMed:[23376078](#), PubMed:[30026317](#)). Also functions as a catalytic subunit of a TRAMP-like complex which has a poly(A) RNA polymerase activity and is involved in a post-transcriptional quality control mechanism. Polyadenylation with short oligo(A) tails is required for the degradative activity of the exosome on several of its nuclear RNA substrates. Has no terminal uridylyltransferase activity, and does not play a role in replication- dependent histone mRNA degradation via uridylation (PubMed:[23376078](#)).

Cellular Location

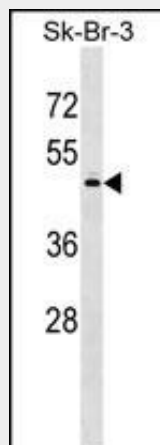
Cytoplasm. Nucleus, nucleoplasm. Note=Excluded from nucleolus, weak staining detected in the cytoplasm

POLS Antibody (Center) - Protocols

Provided below are standard protocols that you may find useful for product applications.

- [Western Blot](#)
- [Blocking Peptides](#)
- [Dot Blot](#)
- [Immunohistochemistry](#)
- [Immunofluorescence](#)
- [Immunoprecipitation](#)
- [Flow Cytometry](#)
- [Cell Culture](#)

POLS Antibody (Center) - Images



POLS Antibody (Center) (Cat. #AP16915c) western blot analysis in SK-BR-3 cell line lysates (35ug/lane). This demonstrates the POLS antibody detected the POLS protein (arrow).

POLS Antibody (Center) - Background

The protein encoded by this gene is a DNA polymerase that is likely involved in DNA repair. In addition, the encoded protein may be required for sister chromatid adhesion. Alternatively spliced transcript variants that encode different isoforms have been described.

POLS Antibody (Center) - References

Jarjanazi, H., et al. Hum. Mutat. 29(4):461-467(2008)
Carson, D.R., et al. Proc. Natl. Acad. Sci. U.S.A. 98(15):8270-8275(2001)
Wang, Z., et al. Science 289(5480):774-779(2000)
Walowsky, C., et al. J. Biol. Chem. 274(11):7302-7308(1999)