

**ARHGEF11 Antibody (Center)**  
**Affinity Purified Rabbit Polyclonal Antibody (Pab)**  
**Catalog # AP16930c****Specification**

---

**ARHGEF11 Antibody (Center) - Product Information**

|                   |  |
|-------------------|--|
| Application       | WB,E   |
| Primary Accession | <a href="#">O15085</a>                               |
| Other Accession   | <a href="#">O9ES67</a> , <a href="#">NP_055599.1</a> |
| Reactivity        | Human  |
| Predicted         | Rat  |
| Host              | Rabbit   |
| Clonality         | Polyclonal   |
| Isotype           | Rabbit IgG   |
| Calculated MW     | 167704   |
| Antigen Region    | 605-632  |

**ARHGEF11 Antibody (Center) - Additional Information****Gene ID** 9826**Other Names**

Rho guanine nucleotide exchange factor 11, PDZ-RhoGEF, ARHGEF11, KIAA0380

**Target/Specificity**

This ARHGEF11 antibody is generated from rabbits immunized with a KLH conjugated synthetic peptide between 605-632 amino acids from the Central region of human ARHGEF11.

**Dilution**

WB~~1:1000

E~~Use at an assay dependent concentration.

**Format**

Purified polyclonal antibody supplied in PBS with 0.09% (W/V) sodium azide. This antibody is purified through a protein A column, followed by peptide affinity purification.

**Storage**

Maintain refrigerated at 2-8°C for up to 2 weeks. For long term storage store at -20°C in small aliquots to prevent freeze-thaw cycles.

**Precautions**

ARHGEF11 Antibody (Center) is for research use only and not for use in diagnostic or therapeutic procedures.

**ARHGEF11 Antibody (Center) - Protein Information****Name** ARHGEF11

**Synonyms** KIAA0380

**Function** May play a role in the regulation of RhoA GTPase by guanine nucleotide-binding alpha-12 (GNA12) and alpha-13 (GNA13). Acts as guanine nucleotide exchange factor (GEF) for RhoA GTPase and may act as GTPase-activating protein (GAP) for GNA12 and GNA13. Involved in neurotrophin-induced neurite outgrowth.

**Cellular Location**

Cytoplasm. Membrane. Note=Translocated to the membrane upon stimulation

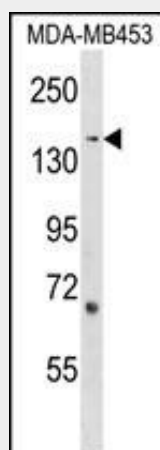
**Tissue Location**

Ubiquitously expressed.

**ARHGEF11 Antibody (Center) - Protocols**

Provided below are standard protocols that you may find useful for product applications.

- [Western Blot](#)
- [Blocking Peptides](#)
- [Dot Blot](#)
- [Immunohistochemistry](#)
- [Immunofluorescence](#)
- [Immunoprecipitation](#)
- [Flow Cytometry](#)
- [Cell Culture](#)

**ARHGEF11 Antibody (Center) - Images**

ARHGEF11 Antibody (Center) (Cat. #AP16930c) western blot analysis in MDA-MB453 cell line lysates (35ug/lane). This demonstrates the ARHGEF11 antibody detected the ARHGEF11 protein (arrow).

**ARHGEF11 Antibody (Center) - Background**

Rho GTPases play a fundamental role in numerous cellular processes that are initiated by extracellular stimuli that work through G protein coupled receptors. The encoded protein may form a complex with G proteins and stimulate Rho-dependent signals. A similar protein in rat interacts with glutamate transporter EAAT4 and modulates its glutamate transport activity. Expression of the

rat protein induces the reorganization of the actin cytoskeleton and its overexpression induces the formation of membrane ruffling and filopodia. Two alternative transcripts encoding different isoforms have been described.

#### **ARHGEF11 Antibody (Center) - References**

Akiyama, K., et al. J. Hum. Genet. (2010) In press :  
Rose, J.E., et al. Mol. Med. 16 (7-8), 247-253 (2010) :  
Ying, Z., et al. Arterioscler. Thromb. Vasc. Biol. 29(10):1657-1663(2009)  
Banerjee, J., et al. Biochemistry 48(33):8032-8043(2009)  
Zheng, M., et al. BMC Struct. Biol. 9, 36 (2009) :