

MSH5 Antibody (Center)
Affinity Purified Rabbit Polyclonal Antibody (Pab)
Catalog # AP16931c**Specification**

MSH5 Antibody (Center) - Product Information

Application	WB,E
Primary Accession	O43196
Other Accession	NP_079535.4 , NP_002432.1
Reactivity	Human
Host	Rabbit
Clonality	Polyclonal
Isotype	Rabbit IgG
Calculated MW	92875
Antigen Region	525-552

MSH5 Antibody (Center) - Additional Information**Gene ID** 4439**Other Names**

MutS protein homolog 5, hMSH5, MSH5

Target/Specificity

This MSH5 antibody is generated from rabbits immunized with a KLH conjugated synthetic peptide between 525-552 amino acids from the Central region of human MSH5.

Dilution

WB~~1:1000

Format

Purified polyclonal antibody supplied in PBS with 0.09% (W/V) sodium azide. This antibody is purified through a protein A column, followed by peptide affinity purification.

Storage

Maintain refrigerated at 2-8°C for up to 2 weeks. For long term storage store at -20°C in small aliquots to prevent freeze-thaw cycles.

Precautions

MSH5 Antibody (Center) is for research use only and not for use in diagnostic or therapeutic procedures.

MSH5 Antibody (Center) - Protein Information**Name** MSH5

Function Involved in DNA mismatch repair and meiotic recombination processes. Facilitates crossovers between homologs during meiosis (By similarity).

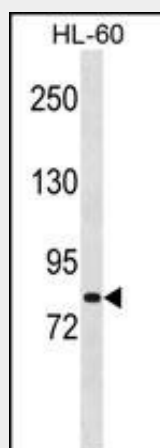
Tissue Location

Widely expressed, with high levels in testis and ovary, including granulosa cells (PubMed:9740671, PubMed:28175301) Also expressed in fetal ovary and adrenal gland (PubMed:28175301)

MSH5 Antibody (Center) - Protocols

Provided below are standard protocols that you may find useful for product applications.

- [Western Blot](#)
- [Blocking Peptides](#)
- [Dot Blot](#)
- [Immunohistochemistry](#)
- [Immunofluorescence](#)
- [Immunoprecipitation](#)
- [Flow Cytometry](#)
- [Cell Culture](#)

MSH5 Antibody (Center) - Images

MSH5 Antibody (Center) (Cat. #AP16931c) western blot analysis in HL-60 cell line lysates (35ug/lane). This demonstrates the MSH5 antibody detected the MSH5 protein (arrow).

MSH5 Antibody (Center) - Background

This gene encodes a member of the mutS family of proteins that are involved in DNA mismatch repair and meiotic recombination. This protein is similar to a *Saccharomyces cerevisiae* protein that participates in segregation fidelity and crossing-over events during meiosis. This protein plays a role in promoting ionizing radiation-induced apoptosis. This protein forms heterooligomers with another member of this family, mutS homolog 4. Polymorphisms in this gene have been linked to various human diseases, including IgA deficiency, common variable immunodeficiency, and premature ovarian failure. Alternative splicing results multiple transcript variants.

MSH5 Antibody (Center) - References

Ucisik-Akkaya, E., et al. Mol. Hum. Reprod. 16(10):770-777(2010)
Pozo, N.D., et al. Hum. Immunol. 71(9):861-864(2010)

Snowden, T., et al. J. Biol. Chem. 283(1):145-154(2008)
Sekine, H., et al. Proc. Natl. Acad. Sci. U.S.A. 104(17):7193-7198(2007)
Yi, W., et al. Biochem. Biophys. Res. Commun. 332(2):524-532(2005)