

DBNL Antibody (C-term)
Affinity Purified Rabbit Polyclonal Antibody (Pab)
Catalog # AP16932b**Specification**

DBNL Antibody (C-term) - Product Information

Application	WB,E
Primary Accession	O9UJU6
Other Accession	NP_001014436.1 , NP_001116428.1
Reactivity	Human
Host	Rabbit
Clonality	Polyclonal
Isotype	Rabbit IgG
Antigen Region	292-319

DBNL Antibody (C-term) - Additional Information**Gene ID** 28988**Other Names**

Drebrin-like protein, Cervical SH3P7, Cervical mucin-associated protein, Drebrin-F, HPK1-interacting protein of 55 kDa, HIP-55, SH3 domain-containing protein 7, DBNL, CMAP, SH3P7

Target/Specificity

This DBNL antibody is generated from rabbits immunized with a KLH conjugated synthetic peptide between 292-319 amino acids from the C-terminal region of human DBNL.

Dilution

WB~~1:1000

E~~Use at an assay dependent concentration.

Format

Purified polyclonal antibody supplied in PBS with 0.09% (W/V) sodium azide. This antibody is purified through a protein A column, followed by peptide affinity purification.

Storage

Maintain refrigerated at 2-8°C for up to 2 weeks. For long term storage store at -20°C in small aliquots to prevent freeze-thaw cycles.

Precautions

DBNL Antibody (C-term) is for research use only and not for use in diagnostic or therapeutic procedures.

DBNL Antibody (C-term) - Protein Information**Name** DBNL**Synonyms** CMAP, SH3P7

Function Adapter protein that binds F-actin and DNML, and thereby plays a role in receptor-mediated endocytosis. Plays a role in the reorganization of the actin cytoskeleton, formation of cell projections, such as neurites, in neuron morphogenesis and synapse formation via its interaction with WASL and COBL. Does not bind G-actin and promote actin polymerization by itself. Required for the formation of organized podosome rosettes (By similarity). May act as a common effector of antigen receptor-signaling pathways in leukocytes. Acts as a key component of the immunological synapse that regulates T-cell activation by bridging TCRs and the actin cytoskeleton to gene activation and endocytic processes.

Cellular Location

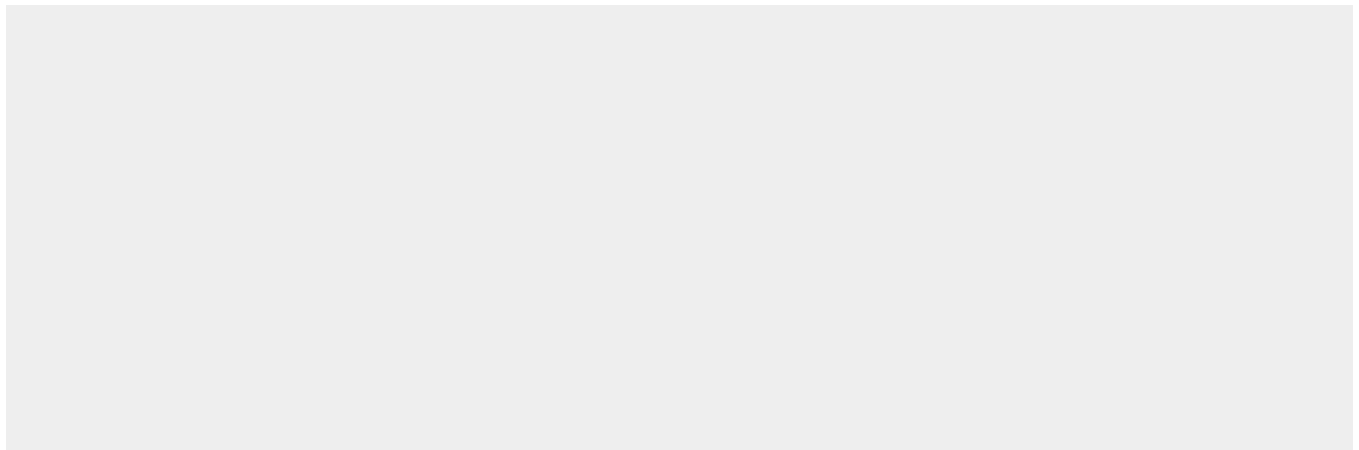
Cytoplasm, cytoskeleton {ECO:0000250|UniProtKB:Q62418}. Cell projection, lamellipodium {ECO:0000250|UniProtKB:Q62418}. Cell projection, ruffle {ECO:0000250|UniProtKB:Q62418}. Cytoplasm, cell cortex {ECO:0000250|UniProtKB:Q62418}. Cytoplasm, cytosol {ECO:0000250|UniProtKB:Q9JHL4}. Synapse {ECO:0000250|UniProtKB:Q62418} Perikaryon {ECO:0000250|UniProtKB:Q62418}. Cell projection, neuron projection {ECO:0000250|UniProtKB:Q62418}. Cell membrane; Peripheral membrane protein {ECO:0000250|UniProtKB:Q62418}; Cytoplasmic side {ECO:0000250|UniProtKB:Q62418}. Cytoplasmic vesicle, clathrin-coated vesicle membrane {ECO:0000250|UniProtKB:Q62418}; Peripheral membrane protein {ECO:0000250|UniProtKB:Q62418}; Cytoplasmic side {ECO:0000250|UniProtKB:Q62418}. Golgi apparatus membrane {ECO:0000250|UniProtKB:Q62418}; Peripheral membrane protein {ECO:0000250|UniProtKB:Q62418}; Cytoplasmic side {ECO:0000250|UniProtKB:Q62418}. Cell projection, podosome {ECO:0000250|UniProtKB:Q62418}. Early endosome. Cell projection, dendrite {ECO:0000250|UniProtKB:Q9JHL4}. Postsynaptic density {ECO:0000250|UniProtKB:Q9JHL4}. Note=Associates with lamellipodial actin and membrane ruffles. Colocalizes with actin and cortactin at podosome dots and podosome rosettes. {ECO:0000250|UniProtKB:Q62418, ECO:0000250|UniProtKB:Q9JHL4}

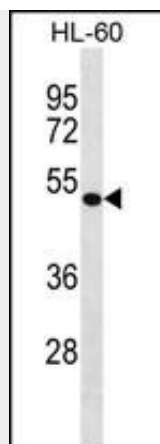
DBNL Antibody (C-term) - Protocols

Provided below are standard protocols that you may find useful for product applications.

- [Western Blot](#)
- [Blocking Peptides](#)
- [Dot Blot](#)
- [Immunohistochemistry](#)
- [Immunofluorescence](#)
- [Immunoprecipitation](#)
- [Flow Cytometry](#)
- [Cell Culture](#)

DBNL Antibody (C-term) - Images





DBNL Antibody (C-term) (Cat. #AP16932b) western blot analysis in HL-60 cell line lysates (35ug/lane). This demonstrates the DBNL antibody detected the DBNL protein (arrow).

DBNL Antibody (C-term) - Background

Actin-binding adapter protein. May act as a common effector of antigen receptor-signaling pathways in leukocytes. Its association with dynamin suggests that it may also connect the actin cytoskeleton to endocytic function. Acts as a key component of the immunological synapse that regulates T-cell activation by bridging TCRs and the actin cytoskeleton to gene activation and endocytic processes. Binds to F-actin but is not involved in actin polymerization, capping or bundling. Does not bind G-actin.

DBNL Antibody (C-term) - References

Venkatesan, K., et al. Nat. Methods 6(1):83-90(2009)
Haeckel, A., et al. J. Neurosci. 28(40):10031-10044(2008)
Le Bras, S., et al. FEBS Lett. 581(5):967-974(2007)
Lamesch, P., et al. Genomics 89(3):307-315(2007)
Ewing, R.M., et al. Mol. Syst. Biol. 3, 89 (2007) :