

PNCK Antibody (C-term)
Affinity Purified Rabbit Polyclonal Antibody (Pab)
Catalog # AP16935b

Specification

PNCK Antibody (C-term) - Product Information

Application	WB,E
Primary Accession	Q6P2M8
Other Accession	NP_001034671.3
Reactivity	Human
Host	Rabbit
Clonality	Polyclonal
Isotype	Rabbit IgG
Calculated MW	38500
Antigen Region	295-323

PNCK Antibody (C-term) - Additional Information

Gene ID 139728

Other Names

Calcium/calmodulin-dependent protein kinase type 1B, CaM kinase I beta, CaM kinase IB, CaM-KI beta, CaMKI-beta, Pregnancy up-regulated non-ubiquitously-expressed CaM kinase, PNCK

Target/Specificity

This PNCK antibody is generated from rabbits immunized with a KLH conjugated synthetic peptide between 295-323 amino acids from the C-terminal region of human PNCK.

Dilution

WB~~1:1000

E~~Use at an assay dependent concentration.

Format

Purified polyclonal antibody supplied in PBS with 0.09% (W/V) sodium azide. This antibody is purified through a protein A column, followed by peptide affinity purification.

Storage

Maintain refrigerated at 2-8°C for up to 2 weeks. For long term storage store at -20°C in small aliquots to prevent freeze-thaw cycles.

Precautions

PNCK Antibody (C-term) is for research use only and not for use in diagnostic or therapeutic procedures.

PNCK Antibody (C-term) - Protein Information

Name PNCK

Function Calcium/calmodulin-dependent protein kinase belonging to a proposed calcium-triggered signaling cascade. In vitro phosphorylates CREB1 and SYN1/synapsin I. Phosphorylates and activates CAMK1 (By similarity).

Cellular Location

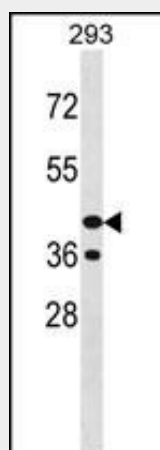
Cytoplasm. Nucleus.

PNCK Antibody (C-term) - Protocols

Provided below are standard protocols that you may find useful for product applications.

- [Western Blot](#)
- [Blocking Peptides](#)
- [Dot Blot](#)
- [Immunohistochemistry](#)
- [Immunofluorescence](#)
- [Immunoprecipitation](#)
- [Flow Cytometry](#)
- [Cell Culture](#)

PNCK Antibody (C-term) - Images



PNCK Antibody (C-term) (Cat. #AP16935b) western blot analysis in 293 cell line lysates (35ug/lane). This demonstrates the PNCK antibody detected the PNCK protein (arrow).

PNCK Antibody (C-term) - Background

PNCK is a member of the calcium/calmodulin-dependent protein kinase family of protein serine/threonine kinases (see CAMK1; MIM 604998) (Gardner et al., 2000 [PubMed 10673339]).

PNCK Antibody (C-term) - References

Deb, T.B., et al. Am. J. Physiol., Cell Physiol. 295 (2), C365-C377 (2008) :
Gardner, H.P., et al. Cancer Res. 60(19):5571-5577(2000)
Gardner, H.P., et al. Genomics 63(2):279-288(2000)