

CGNL1 Antibody (N-term)
Affinity Purified Rabbit Polyclonal Antibody (Pab)
Catalog # AP16937A

Specification

CGNL1 Antibody (N-term) - Product Information

Application	WB,E
Primary Accession	Q0VF96
Other Accession	Q6AW69 , NP_116255.2
Reactivity	Human
Predicted	Mouse
Host	Rabbit
Clonality	Polyclonal
Isotype	Rabbit IgG
Calculated MW	149079
Antigen Region	317-344

CGNL1 Antibody (N-term) - Additional Information

Gene ID 84952

Other Names

Cingulin-like protein 1, Junction-associated coiled-coil protein, Paracingulin, CGNL1, JACOP, KIAA1749

Target/Specificity

This CGNL1 antibody is generated from rabbits immunized with a KLH conjugated synthetic peptide between 317-344 amino acids from the N-terminal region of human CGNL1.

Dilution

WB~~1:1000

Format

Purified polyclonal antibody supplied in PBS with 0.09% (W/V) sodium azide. This antibody is purified through a protein A column, followed by peptide affinity purification.

Storage

Maintain refrigerated at 2-8°C for up to 2 weeks. For long term storage store at -20°C in small aliquots to prevent freeze-thaw cycles.

Precautions

CGNL1 Antibody (N-term) is for research use only and not for use in diagnostic or therapeutic procedures.

CGNL1 Antibody (N-term) - Protein Information

Name CGNL1

Synonyms JACOP, KIAA1749

Function May be involved in anchoring the apical junctional complex, especially tight junctions, to actin-based cytoskeletons.

Cellular Location

Cell junction, tight junction {ECO:0000250|UniProtKB:Q6AW69}. Note=Localizes to the apical junction complex composed of tight and adherens junctions (PubMed:22891260). In the liver and kidney, it is also found along non-junctional actin filament bundles in addition to the apical junction (By similarity) {ECO:0000250|UniProtKB:Q6AW69, ECO:0000269|PubMed:22891260}

Tissue Location

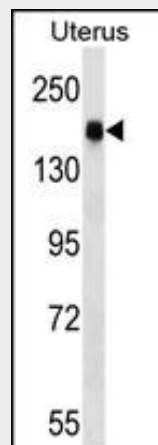
Smooth muscle, spleen, testis, fetal brain, amygdala, corpus callosum, cerebellum, thalamus and subthalamic nucleus of adult brain.

CGNL1 Antibody (N-term) - Protocols

Provided below are standard protocols that you may find useful for product applications.

- [Western Blot](#)
- [Blocking Peptides](#)
- [Dot Blot](#)
- [Immunohistochemistry](#)
- [Immunofluorescence](#)
- [Immunoprecipitation](#)
- [Flow Cytometry](#)
- [Cell Culture](#)

CGNL1 Antibody (N-term) - Images



CGNL1 Antibody (N-term) (Cat. #AP16937a) western blot analysis in human normal Uterus tissue lysates (35ug/lane). This demonstrates the CGNL1 antibody detected the CGNL1 protein (arrow).

CGNL1 Antibody (N-term) - Background

CGNL1 may be involved in anchoring the apical junctional complex, especially tight junctions, to actin-based cytoskeletons (By similarity).

CGNL1 Antibody (N-term) - References

Guillemot, L., et al. Mol. Biol. Cell 19(10):4442-4453(2008) Ohnishi, H., et al. J. Biol. Chem. 279(44):46014-46022(2004) Shozu, M., et al. N. Engl. J. Med. 348(19):1855-1865(2003)