

**MS4A7 Antibody (Center)**  
**Affinity Purified Rabbit Polyclonal Antibody (Pab)**  
**Catalog # AP16946c****Specification**

---

**MS4A7 Antibody (Center) - Product Information**

|                   |   |
|-------------------|---|
| Application       | WB,E  |
| Primary Accession | <a href="#">O9GZW8</a>                                    |
| Other Accession   | <a href="#">NP_996821.1</a> , <a href="#">NP_996823.1</a> |
| Reactivity        | Human   |
| Host              | Rabbit  |
| Clonality         | Polyclonal  |
| Isotype           | Rabbit IgG  |
| Calculated MW     | 26131   |
| Antigen Region    | 137-164   |

**MS4A7 Antibody (Center) - Additional Information****Gene ID** 58475**Other Names**

Membrane-spanning 4-domains subfamily A member 7, CD20 antigen-like 4, CD20/FC-epsilon-RI-beta family member 4, Four-span transmembrane protein 2, MS4A7, 4SPAN2, CD20L4, CFFM4

**Target/Specificity**

This MS4A7 antibody is generated from rabbits immunized with a KLH conjugated synthetic peptide between 137-164 amino acids from the Central region of human MS4A7.

**Dilution**

WB~~1:1000

E~~Use at an assay dependent concentration.

**Format**

Purified polyclonal antibody supplied in PBS with 0.09% (W/V) sodium azide. This antibody is purified through a protein A column, followed by peptide affinity purification.

**Storage**

Maintain refrigerated at 2-8°C for up to 2 weeks. For long term storage store at -20°C in small aliquots to prevent freeze-thaw cycles.

**Precautions**

MS4A7 Antibody (Center) is for research use only and not for use in diagnostic or therapeutic procedures.

**MS4A7 Antibody (Center) - Protein Information****Name** MS4A7

**Synonyms** 4SPAN2, CD20L4, CFFM4

**Function** May be involved in signal transduction as a component of a multimeric receptor complex.

**Cellular Location**

Membrane; Multi-pass membrane protein.

**Tissue Location**

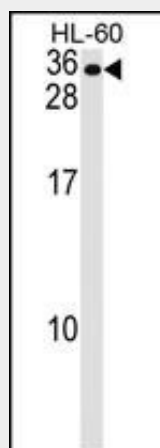
Ubiquitous expression in normal tissues. Expression is more elevated in adult liver, lung, spleen, and heart than in their fetal counterparts, and is higher in normal tissues than in the cancerous tissue or cell lines. Low levels of expression were detected in the promonocytic stage, whereas high levels of expression were detected in mature monocytes

**MS4A7 Antibody (Center) - Protocols**

Provided below are standard protocols that you may find useful for product applications.

- [Western Blot](#)
- [Blocking Peptides](#)
- [Dot Blot](#)
- [Immunohistochemistry](#)
- [Immunofluorescence](#)
- [Immunoprecipitation](#)
- [Flow Cytometry](#)
- [Cell Culture](#)

**MS4A7 Antibody (Center) - Images**



MS4A7 Antibody (Center) (Cat. #AP16946c) western blot analysis in HL-60 cell line lysates (35ug/lane). This demonstrates the MS4A7 antibody detected the MS4A7 protein (arrow).

**MS4A7 Antibody (Center) - Background**

This gene encodes a member of the membrane-spanning 4A gene family, members of which are characterized by common structural features and similar intron/exon splice boundaries and display unique expression patterns in hematopoietic cells and nonlymphoid tissues. This family member is associated with mature cellular function in the monocytic lineage, and it may be a

component of a receptor complex involved in signal transduction. This gene is localized to 11q12, in a cluster of other family members. At least four alternatively spliced transcript variants encoding two distinct isoforms have been observed. [provided by RefSeq].

#### **MS4A7 Antibody (Center) - References**

Rose, J.E., et al. Mol. Med. 16 (7-8), 247-253 (2010) :  
Gingras, M.C., et al. Immunogenetics 53(6):468-476(2001)  
Liang, Y., et al. Immunogenetics 53(5):357-368(2001)  
Liang, Y., et al. Genomics 72(2):119-127(2001)  
Ishibashi, K., et al. Gene 264(1):87-93(2001)