

FKBP6 Antibody (C-term)
Affinity Purified Rabbit Polyclonal Antibody (Pab)
Catalog # AP16950b**Specification**

FKBP6 Antibody (C-term) - Product Information

Application	WB,E
Primary Accession	O75344
Other Accession	NP_003593.3
Reactivity	Human
Host	Rabbit
Clonality	Polyclonal
Isotype	Rabbit IgG
Calculated MW	37214
Antigen Region	256-284

FKBP6 Antibody (C-term) - Additional Information**Gene ID** 8468**Other Names**

Inactive peptidyl-prolyl cis-trans isomerase FKBP6, Inactive PPlase FKBP6, 36 kDa FK506-binding protein, 36 kDa FKBP, FKBP-36, FK506-binding protein 6, FKBP-6, Immunophilin FKBP36, FKBP6, FKBP36

Target/Specificity

This FKBP6 antibody is generated from rabbits immunized with a KLH conjugated synthetic peptide between 256-284 amino acids from the C-terminal region of human FKBP6.

Dilution

WB~~1:1000

E~~Use at an assay dependent concentration.

Format

Purified polyclonal antibody supplied in PBS with 0.09% (W/V) sodium azide. This antibody is purified through a protein A column, followed by peptide affinity purification.

Storage

Maintain refrigerated at 2-8°C for up to 2 weeks. For long term storage store at -20°C in small aliquots to prevent freeze-thaw cycles.

Precautions

FKBP6 Antibody (C-term) is for research use only and not for use in diagnostic or therapeutic procedures.

FKBP6 Antibody (C-term) - Protein Information**Name** FKBP6

Synonyms FKBP36

Function Has an essential role in spermatogenesis (PubMed:[36150389](#)). It is required to repress transposable elements and prevent their mobilization, which is essential for the germline integrity (By similarity). Acts via the piRNA metabolic process, which mediates the repression of transposable elements during meiosis by forming complexes composed of piRNAs and Piwi proteins and govern the methylation and subsequent repression of transposons (By similarity). Acts as a co- chaperone via its interaction with HSP90 and is required for the piRNA amplification process, the secondary piRNA biogenesis (By similarity). May be required together with HSP90 in removal of 16 nucleotide ping- pong by-products from Piwi complexes, possibly facilitating turnover of Piwi complexes (By similarity).

Cellular Location

Cytoplasm. Nucleus. Note=In spermatocytes, it colocalizes with PIWIL1 in large cytoplasmic granules (PubMed:[36150389](#)). Does not localize to the synaptonemal complex (PubMed:[36150389](#))

Tissue Location

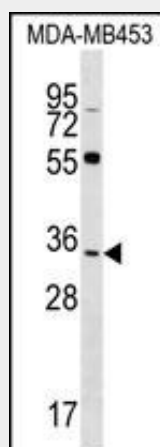
Detected in all tissues examined, with higher expression in testis, heart, skeletal muscle, liver, and kidney

FKBP6 Antibody (C-term) - Protocols

Provided below are standard protocols that you may find useful for product applications.

- [Western Blot](#)
- [Blocking Peptides](#)
- [Dot Blot](#)
- [Immunohistochemistry](#)
- [Immunofluorescence](#)
- [Immunoprecipitation](#)
- [Flow Cytometry](#)
- [Cell Culture](#)

FKBP6 Antibody (C-term) - Images



FKBP6 Antibody (C-term) (Cat. #AP16950b) western blot analysis in MDA-MB453 cell line lysates (35ug/lane). This demonstrates the FKBP6 antibody detected the FKBP6 protein (arrow).

FKBP6 Antibody (C-term) - Background

The protein encoded by this gene is a member of the immunophilin protein family, which play a role in immunoregulation and basic cellular processes involving protein folding and trafficking. The protein may have cis-trans prolyl isomerase activity, and binds to clathrin heavy chain and heat shock protein 72. This gene is found to be deleted in Williams syndrome, and the orthologous gene in mouse is essential for fertility and homologous pairing in male meiosis.

FKBP6 Antibody (C-term) - References

Aston, K.I., et al. Hum. Reprod. 25(6):1383-1397(2010)
Jarczowski, F., et al. J. Biol. Chem. 284(2):766-773(2009)
Jarczowski, F., et al. Biochemistry 47(26):6946-6952(2008)
Zhang, W., et al. Reproduction 133(2):511-516(2007)
Miyamoto, T., et al. Cell. Mol. Biol. Lett. 11(4):557-569(2006)