

SRM Antibody (Center)
Affinity Purified Rabbit Polyclonal Antibody (Pab)
Catalog # AP16953c**Specification**

SRM Antibody (Center) - Product Information

Application	WB,E
Primary Accession	P19623
Other Accession	Q64674 , NP_003123.2
Reactivity	Human
Predicted	Mouse
Host	Rabbit
Clonality	Polyclonal
Isotype	Rabbit IgG
Calculated MW	33825
Antigen Region	158-187

SRM Antibody (Center) - Additional Information**Gene ID** 6723**Other Names**

Spermidine synthase, SPDSY, Putrescine aminopropyltransferase, SRM, SPS1, SRML1

Target/Specificity

This SRM antibody is generated from rabbits immunized with a KLH conjugated synthetic peptide between 158-187 amino acids from the Central region of human SRM.

Dilution

WB~~1:1000

Format

Purified polyclonal antibody supplied in PBS with 0.09% (W/V) sodium azide. This antibody is purified through a protein A column, followed by peptide affinity purification.

Storage

Maintain refrigerated at 2-8°C for up to 2 weeks. For long term storage store at -20°C in small aliquots to prevent freeze-thaw cycles.

Precautions

SRM Antibody (Center) is for research use only and not for use in diagnostic or therapeutic procedures.

SRM Antibody (Center) - Protein Information**Name** SRM**Synonyms** SPS1, SRML1

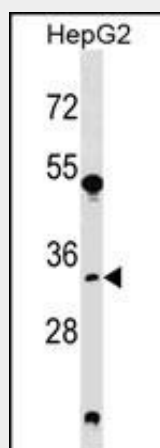
Function Catalyzes the production of spermidine from putrescine and decarboxylated S-adenosylmethionine (dcSAM). Has a strong preference for putrescine as substrate, and has very low activity towards 1,3- diaminopropane. Has extremely low activity towards spermidine.

SRM Antibody (Center) - Protocols

Provided below are standard protocols that you may find useful for product applications.

- [Western Blot](#)
- [Blocking Peptides](#)
- [Dot Blot](#)
- [Immunohistochemistry](#)
- [Immunofluorescence](#)
- [Immunoprecipitation](#)
- [Flow Cytometry](#)
- [Cell Culture](#)

SRM Antibody (Center) - Images



SRM Antibody (Center) (Cat. #AP16953c) western blot analysis in HepG2 cell line lysates (35ug/lane). This demonstrates the SRM antibody detected the SRM protein (arrow).

SRM Antibody (Center) - Background

The polyamines putrescine, spermine, and spermidine are ubiquitous polycationic mediators of cell growth and differentiation. Spermidine synthase is one of four enzymes in the polyamine-biosynthetic pathway and carries out the final step of spermidine biosynthesis. This enzyme catalyzes the conversion of putrescine to spermidine using decarboxylated S-adenosylmethionine as the cofactor.

SRM Antibody (Center) - References

Wu, H., et al. Biochemistry 46(28):8331-8339(2007)
Nishikawa, Y., et al. Biochem. J. 321 (PT 2), 537-543 (1997) :
Lakanen, J.R., et al. J. Med. Chem. 38(14):2714-2727(1995)
Kauppinen, L. FEBS Lett. 365(1):61-65(1995)
Kauppinen, L., et al. Biochem. J. 293 (PT 2), 513-516 (1993) :