

MTIF2 Antibody (N-term)
Affinity Purified Rabbit Polyclonal Antibody (Pab)
Catalog # AP16956a**Specification**

MTIF2 Antibody (N-term) - Product Information

Application	WB,E
Primary Accession	P46199
Other Accession	NP_001005369.1 , NP_002444.2
Reactivity	Human
Host	Rabbit
Clonality	Polyclonal
Isotype	Rabbit IgG
Calculated MW	81317
Antigen Region	138-167

MTIF2 Antibody (N-term) - Additional Information**Gene ID** 4528**Other Names**

Translation initiation factor IF-2, mitochondrial, IF-2(Mt), IF-2Mt, IF2(mt), MTIF2

Target/Specificity

This MTIF2 antibody is generated from rabbits immunized with a KLH conjugated synthetic peptide between 138-167 amino acids from the N-terminal region of human MTIF2.

Dilution

WB~~1:1000

E~~Use at an assay dependent concentration.

Format

Purified polyclonal antibody supplied in PBS with 0.09% (W/V) sodium azide. This antibody is purified through a protein A column, followed by peptide affinity purification.

Storage

Maintain refrigerated at 2-8°C for up to 2 weeks. For long term storage store at -20°C in small aliquots to prevent freeze-thaw cycles.

Precautions

MTIF2 Antibody (N-term) is for research use only and not for use in diagnostic or therapeutic procedures.

MTIF2 Antibody (N-term) - Protein Information**Name** MTIF2**Function** One of the essential components for the initiation of protein synthesis. Protects

formylmethionyl-tRNA from spontaneous hydrolysis and promotes its binding to the 30S ribosomal subunits. Also involved in the hydrolysis of GTP during the formation of the 70S ribosomal complex.

Cellular Location

Mitochondrion.

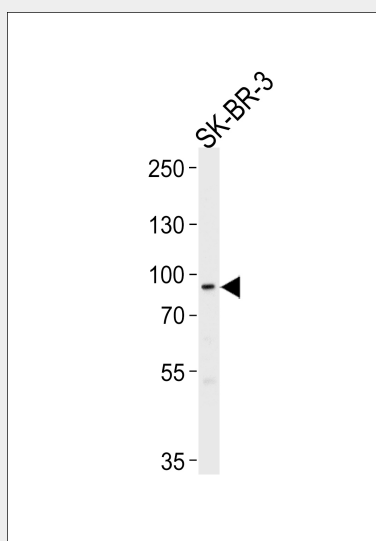
Tissue Location

Expressed in all tissues examined. Highest level in skeletal muscle

MTIF2 Antibody (N-term) - Protocols

Provided below are standard protocols that you may find useful for product applications.

- [Western Blot](#)
- [Blocking Peptides](#)
- [Dot Blot](#)
- [Immunohistochemistry](#)
- [Immunofluorescence](#)
- [Immunoprecipitation](#)
- [Flow Cytometry](#)
- [Cell Culture](#)

MTIF2 Antibody (N-term) - Images

Western blot analysis of lysate from SK-BR-3 cell line, using MTIF2 Antibody (N-term)(Cat. #AP16956a). AP16956a was diluted at 1:1000 at each lane. A goat anti-rabbit IgG H&L(HRP) at 1:5000 dilution was used as the secondary antibody. Lysate at 35ug per lane.

MTIF2 Antibody (N-term) - Background

During the initiation of protein biosynthesis, initiation factor-2 (IF-2) promotes the binding of the initiator tRNA to the small subunit of the ribosome in a GTP-dependent manner. Prokaryotic IF-2 is a single polypeptide, while eukaryotic cytoplasmic IF-2 (eIF-2) is a trimeric protein. Bovine liver mitochondria contain IF-2(mt), an 85-kD monomeric protein that is

equivalent to prokaryotic IF-2. The predicted 727-amino acid human protein contains a 29-amino acid presequence. Human IF-2(mt) shares 32 to 38% amino acid sequence identity with yeast IF-2(mt) and several prokaryotic IF-2s, with the greatest degree of conservation in the G domains of the proteins. Two transcript variants encoding the same protein have been found for this gene. [provided by RefSeq].

MTIF2 Antibody (N-term) - References

Dick, D.M., et al. Am. J. Med. Genet. B Neuropsychiatr. Genet. (2010) In press :
Reiling, E., et al. Eur. J. Hum. Genet. 17(8):1056-1062(2009)
Miura, E., et al. Plant Cell 19(4):1313-1328(2007)
Bouwmeester, T., et al. Nat. Cell Biol. 6(2):97-105(2004)
Overman, R.G. Jr., et al. Biochim. Biophys. Acta 1628(3):195-205(2003)