

GUCY2F Antibody (C-term)
Affinity Purified Rabbit Polyclonal Antibody (Pab)
Catalog # AP16965B

Specification

GUCY2F Antibody (C-term) - Product Information

Application	WB,E
Primary Accession	P51841
Other Accession	P51842 , Q5SDA5 , O02740 , NP_001513.2
Reactivity	Human
Predicted	Bovine, Mouse, Rat
Host	Rabbit
Clonality	Polyclonal
Isotype	Rabbit IgG
Calculated MW	124850
Antigen Region	828-856

GUCY2F Antibody (C-term) - Additional Information

Gene ID 2986

Other Names

Retinal guanylyl cyclase 2, RETGC-2, Guanylate cyclase 2F, retinal, Guanylate cyclase F, GC-F, Rod outer segment membrane guanylate cyclase 2, ROS-GC2, GUCY2F, GUC2F, RETGC2

Target/Specificity

This GUCY2F antibody is generated from rabbits immunized with a KLH conjugated synthetic peptide between 828-856 amino acids from the C-terminal region of human GUCY2F.

Dilution

WB~~1:1000

Format

Purified polyclonal antibody supplied in PBS with 0.09% (W/V) sodium azide. This antibody is purified through a protein A column, followed by peptide affinity purification.

Storage

Maintain refrigerated at 2-8°C for up to 2 weeks. For long term storage store at -20°C in small aliquots to prevent freeze-thaw cycles.

Precautions

GUCY2F Antibody (C-term) is for research use only and not for use in diagnostic or therapeutic procedures.

GUCY2F Antibody (C-term) - Protein Information

Name GUCY2F

Synonyms GUC2F, RETGC2

Function Responsible for the synthesis of cyclic GMP (cGMP) in rods and cones of photoreceptors (PubMed:[7777544](#)). Plays an essential role in phototransduction, by mediating cGMP replenishment (By similarity). May also participate in the trafficking of membrane-associated proteins to the photoreceptor outer segment membrane (By similarity).

Cellular Location

Photoreceptor outer segment membrane {ECO:0000250|UniProtKB:O02740}; Single-pass type I membrane protein

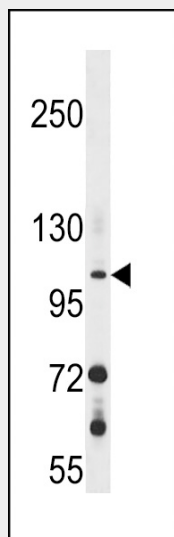
Tissue Location

Retina. Localized exclusively in the outer nuclear layer and inner segments of the rod and cone photoreceptor cells

GUCY2F Antibody (C-term) - Protocols

Provided below are standard protocols that you may find useful for product applications.

- [Western Blot](#)
- [Blocking Peptides](#)
- [Dot Blot](#)
- [Immunohistochemistry](#)
- [Immunofluorescence](#)
- [Immunoprecipitation](#)
- [Flow Cytometry](#)
- [Cell Culture](#)

GUCY2F Antibody (C-term) - Images

GUCY2F Antibody (C-term) (Cat. #AP16965b) western blot analysis in 293 cell line lysates (35ug/lane). This demonstrates the GUCY2F antibody detected the GUCY2F protein (arrow).

GUCY2F Antibody (C-term) - Background

The protein encoded by this gene is a guanylyl cyclase found predominantly in photoreceptors in the retina. The encoded

protein is thought to be involved in resynthesis of cGMP after light activation of the visual signal transduction cascade, allowing a return to the dark state. This protein is a single-pass type I membrane protein. Defects in this gene may be a cause of X-linked retinitis pigmentosa.

GUCY2F Antibody (C-term) - References

Blackford, A., et al. Cancer Res. 69(8):3681-3688(2009)
Helten, A., et al. J. Neurochem. 103(4):1439-1446(2007)
Wood, L.D., et al. Hum. Mutat. 27(10):1060-1061(2006)
Ross, M.T., et al. Nature 434(7031):325-337(2005)
Laura, R.P., et al. Biochemistry 37(32):11264-11271(1998)