

RIMBP3 Antibody (N-term)
Affinity Purified Rabbit Polyclonal Antibody (Pab)
Catalog # AP16969a**Specification**

RIMBP3 Antibody (N-term) - Product Information

Application	WB,E
Primary Accession	Q9UFD9
Other Accession	A6NJZ7 , A6NNM3
Reactivity	Human
Host	Rabbit
Clonality	Polyclonal
Isotype	Rabbit IgG
Calculated MW	180717
Antigen Region	180-209

RIMBP3 Antibody (N-term) - Additional Information**Gene ID** 85376**Other Names**

RIMS-binding protein 3A, RIM-BP3A, RIMS-binding protein 31, RIM-BP31, RIMBP3, KIAA1666, RIMBP3A

Target/Specificity

This RIMBP3 antibody is generated from rabbits immunized with a KLH conjugated synthetic peptide between 180-209 amino acids from the N-terminal region of human RIMBP3.

Dilution

WB~~1:1000

E~~Use at an assay dependent concentration.

Format

Purified polyclonal antibody supplied in PBS with 0.09% (W/V) sodium azide. This antibody is purified through a protein A column, followed by peptide affinity purification.

Storage

Maintain refrigerated at 2-8°C for up to 2 weeks. For long term storage store at -20°C in small aliquots to prevent freeze-thaw cycles.

Precautions

RIMBP3 Antibody (N-term) is for research use only and not for use in diagnostic or therapeutic procedures.

RIMBP3 Antibody (N-term) - Protein Information**Name** RIMBP3

Synonyms KIAA1666, RIMBP3A

Function Probable component of the manchette, a microtubule-based structure which plays a key role in sperm head morphogenesis during late stages of sperm development.

Cellular Location

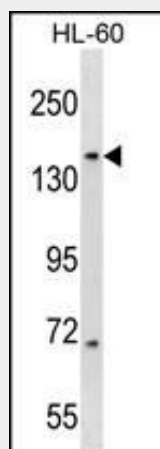
Cytoplasm, cytoskeleton {ECO:0000250|UniProtKB:Q3V0F0}. Note=In elongating spermatids, localizes to the manchette. {ECO:0000250|UniProtKB:Q3V0F0}

RIMBP3 Antibody (N-term) - Protocols

Provided below are standard protocols that you may find useful for product applications.

- [Western Blot](#)
- [Blocking Peptides](#)
- [Dot Blot](#)
- [Immunohistochemistry](#)
- [Immunofluorescence](#)
- [Immunoprecipitation](#)
- [Flow Cytometry](#)
- [Cell Culture](#)

RIMBP3 Antibody (N-term) - Images



RIMBP3 Antibody (N-term) (Cat. #AP16969a) western blot analysis in HL-60 cell line lysates (35ug/lane). This demonstrates the RIMBP3 antibody detected the RIMBP3 protein (arrow).

RIMBP3 Antibody (N-term) - Background

RIM-binding proteins (RIMBPs) serve as adaptors during vesicle fusion and release by forming links between synaptic-vesicle fusion apparatuses and calcium channels. RIMBP3 has been identified as a novel manchette-associated protein, and three members of RIMBP3 are known to exist: RIMBP3A, RIMBP3B and RIMBP3C. Each form of RIMBP3 exists as a large multidomain protein encoding three SH3-domains and two to three fibronectin III repeats. RIMBP3 plays a role in spermatid development and is required for normal sperm morphology and male fertility. RIMBP3 is found at high levels outside of the nervous system, with especially high expression in testis. RIMBP3C (RIMS binding protein 3C), also known as RIMBP3.3, or RIM-BP3.3, is a 1545 amino acid protein.