

**KLHDC8B Antibody (C-term)**  
**Affinity Purified Rabbit Polyclonal Antibody (Pab)**  
**Catalog # AP16984B****Specification**

---

**KLHDC8B Antibody (C-term) - Product Information**

Application	WB,E
Primary Accession	<a href="#">Q8IXV7</a>
Other Accession	<a href="#">Q5XIA9</a> , <a href="#">Q9D2D9</a> , <a href="#">Q5E9V5</a> , <a href="#">NP_775817.1</a>
Reactivity	Human
Predicted	Bovine, Mouse, Rat
Host	Rabbit
Clonality	Polyclonal
Isotype	Rabbit IgG
Calculated MW	37676
Antigen Region	245-273

**KLHDC8B Antibody (C-term) - Additional Information****Gene ID** 200942**Other Names**

Kelch domain-containing protein 8B, KLHDC8B

**Target/Specificity**

This KLHDC8B antibody is generated from rabbits immunized with a KLH conjugated synthetic peptide between 245-273 amino acids from the C-terminal region of human KLHDC8B.

**Dilution**

WB~~1:1000

**Format**

Purified polyclonal antibody supplied in PBS with 0.09% (W/V) sodium azide. This antibody is purified through a protein A column, followed by peptide affinity purification.

**Storage**

Maintain refrigerated at 2-8°C for up to 2 weeks. For long term storage store at -20°C in small aliquots to prevent freeze-thaw cycles.

**Precautions**

KLHDC8B Antibody (C-term) is for research use only and not for use in diagnostic or therapeutic procedures.

**KLHDC8B Antibody (C-term) - Protein Information****Name** KLHDC8B {ECO:0000303|PubMed:19706467}**Function** Involved in pinching off the separated nuclei at the cleavage furrow and in cytokinesis

(PubMed:[20107318](#)). Required for mitotic integrity and maintenance of chromosomal stability. Protects cells against mitotic errors, centrosomal amplification, micronucleus formation and aneuploidy. Plays a key role of midbody function involving abscission of the daughter cells during cytokinesis and appropriate chromosomal and nuclear segregation into the daughter cells (PubMed:[22988245](#), PubMed:[23713010](#)).

#### **Cellular Location**

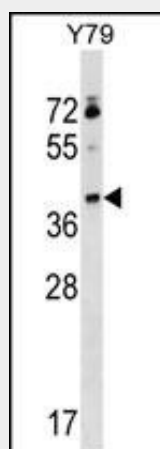
Cytoplasm. Midbody. Note=In mitotic cells, concentrates in the midbody of the cytoplasmic bridge linking daughter cells as they are about to separate during cytokinesis.

#### **KLHDC8B Antibody (C-term) - Protocols**

Provided below are standard protocols that you may find useful for product applications.

- [Western Blot](#)
- [Blocking Peptides](#)
- [Dot Blot](#)
- [Immunohistochemistry](#)
- [Immunofluorescence](#)
- [Immunoprecipitation](#)
- [Flow Cytometry](#)
- [Cell Culture](#)

#### **KLHDC8B Antibody (C-term) - Images**



KLHDC8B Antibody (C-term) (Cat. #AP16984b) western blot analysis in Y79 cell line lysates (35ug/lane). This demonstrates the KLHDC8B antibody detected the KLHDC8B protein (arrow).

#### **KLHDC8B Antibody (C-term) - Background**

This gene encodes a protein which forms a distinct beta-propeller protein structure of kelch domains allowing for protein-protein interactions. Mutations in this gene have been associated with Hodgkin lymphoma.

#### **KLHDC8B Antibody (C-term) - References**

Krem, M.M., et al. Cell Cycle 9(4):670-675(2010)  
Salipante, S.J., et al. Proc. Natl. Acad. Sci. U.S.A. 106(35):14920-14925(2009)  
Wan, D., et al. Proc. Natl. Acad. Sci. U.S.A. 101(44):15724-15729(2004)

Adams, M.D., et al. Nat. Genet. 4(4):373-380(1993)