

**NOLC1 Antibody (N-term)**  
**Affinity Purified Rabbit Polyclonal Antibody (Pab)**  
**Catalog # AP16987A**

**Specification**

---

**NOLC1 Antibody (N-term) - Product Information**

Application	WB,E
Primary Accession	<a href="#">Q14978</a>
Other Accession	<a href="#">NP_004732.2</a>
Reactivity	Human
Host	Rabbit
Clonality	Polyclonal
Isotype	Rabbit IgG
Calculated MW	73603
Antigen Region	162-191

**NOLC1 Antibody (N-term) - Additional Information**

**Gene ID** 9221

**Other Names**

Nucleolar and coiled-body phosphoprotein 1, 140 kDa nucleolar phosphoprotein, Nopp140, Hepatitis C virus NS5A-transactivated protein 13, HCV NS5A-transactivated protein 13, Nucleolar 130 kDa protein, Nucleolar phosphoprotein p130, NOLC1, KIAA0035, NS5ATP13

**Target/Specificity**

This NOLC1 antibody is generated from rabbits immunized with a KLH conjugated synthetic peptide between 162-191 amino acids from the N-terminal region of human NOLC1.

**Dilution**

WB~~1:1000

E~~Use at an assay dependent concentration.

**Format**

Purified polyclonal antibody supplied in PBS with 0.09% (W/V) sodium azide. This antibody is purified through a protein A column, followed by peptide affinity purification.

**Storage**

Maintain refrigerated at 2-8°C for up to 2 weeks. For long term storage store at -20°C in small aliquots to prevent freeze-thaw cycles.

**Precautions**

NOLC1 Antibody (N-term) is for research use only and not for use in diagnostic or therapeutic procedures.

**NOLC1 Antibody (N-term) - Protein Information**

**Name** NOLC1 ([HGNC:15608](#))

**Function** Nucleolar protein that acts as a regulator of RNA polymerase I by connecting RNA polymerase I with enzymes responsible for ribosomal processing and modification (PubMed:[10567578](#), PubMed:[26399832](#)). Required for neural crest specification: following monoubiquitination by the BCR(KBTBD8) complex, associates with TCOF1 and acts as a platform to connect RNA polymerase I with enzymes responsible for ribosomal processing and modification, leading to remodel the translational program of differentiating cells in favor of neural crest specification (PubMed:[26399832](#)). Involved in nucleogenesis, possibly by playing a role in the maintenance of the fundamental structure of the fibrillar center and dense fibrillar component in the nucleolus (PubMed:[9016786](#)). It has intrinsic GTPase and ATPase activities (PubMed:[9016786](#)).

#### **Cellular Location**

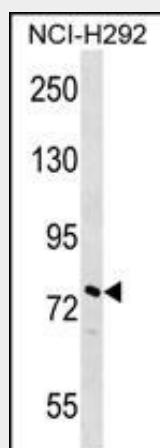
Nucleus, nucleolus. Cytoplasm. Note=Shuttles between the nucleolus and the cytoplasm. At telophase it begins to assemble into granular-like pre-nucleolar bodies which are subsequently relocated to nucleoli at the early G1-phase.

#### **NOLC1 Antibody (N-term) - Protocols**

Provided below are standard protocols that you may find useful for product applications.

- [Western Blot](#)
- [Blocking Peptides](#)
- [Dot Blot](#)
- [Immunohistochemistry](#)
- [Immunofluorescence](#)
- [Immunoprecipitation](#)
- [Flow Cytometry](#)
- [Cell Culture](#)

#### **NOLC1 Antibody (N-term) - Images**



NOLC1 Antibody (N-term) (Cat. #AP16987a) western blot analysis in NCI-H292 cell line lysates (35ug/lane). This demonstrates the NOLC1 antibody detected the NOLC1 protein (arrow).

#### **NOLC1 Antibody (N-term) - Background**

Related to nucleogenesis, may play a role in the maintenance of the fundamental structure of the fibrillar center and dense fibrillar component in the nucleolus. It has intrinsic GTPase and ATPase activities. May play an important role in transcription catalyzed by RNA polymerase I.

#### **NOLC1 Antibody (N-term) - References**

Thiry, M., et al. Histochem. Cell Biol. 132(2):129-140(2009)  
Hwang, Y.C., et al. Am. J. Pathol. 175(1):342-354(2009)  
Renvoise, B., et al. Hum. Mol. Genet. 18(7):1181-1189(2009)  
Lee, W.K., et al. Biochem. Biophys. Res. Commun. 376(2):439-444(2008)  
Tsai, Y.T., et al. J. Biomed. Sci. 15(4):471-486(2008)