

**SIPA1 Antibody (C-term)**  
**Affinity Purified Rabbit Polyclonal Antibody (Pab)**  
**Catalog # AP16989B****Specification**

---

**SIPA1 Antibody (C-term) - Product Information**

Application	WB,E
Primary Accession	<a href="#">Q96FS4</a>
Other Accession	<a href="#">NP_006738.3</a> , <a href="#">NP_694985.29</a>
Reactivity	Human
Host	Rabbit
Clonality	Polyclonal
Isotype	Rabbit IgG
Calculated MW	112149
Antigen Region	942-970

**SIPA1 Antibody (C-term) - Additional Information****Gene ID** 6494**Other Names**Signal-induced proliferation-associated protein 1, Sipa-1, GTPase-activating protein Spa-1, p130  
SPA-1, SIPA1, SPA1**Target/Specificity**

This SIPA1 antibody is generated from rabbits immunized with a KLH conjugated synthetic peptide between 942-970 amino acids from the C-terminal region of human SIPA1.

**Dilution**

WB~~1:1000

E~~Use at an assay dependent concentration.

**Format**

Purified polyclonal antibody supplied in PBS with 0.09% (W/V) sodium azide. This antibody is purified through a protein A column, followed by peptide affinity purification.

**Storage**

Maintain refrigerated at 2-8°C for up to 2 weeks. For long term storage store at -20°C in small aliquots to prevent freeze-thaw cycles.

**Precautions**

SIPA1 Antibody (C-term) is for research use only and not for use in diagnostic or therapeutic procedures.

**SIPA1 Antibody (C-term) - Protein Information****Name** SIPA1

### Synonyms SPA1

**Function** GTPase activator for the nuclear Ras-related regulatory proteins Rap1 and Rap2 in vitro, converting them to the putatively inactive GDP-bound state (PubMed:[9346962](#)). Affects cell cycle progression (By similarity).

### Cellular Location

Nucleus. Cytoplasm, perinuclear region. Endomembrane system; Peripheral membrane protein. Note=Mostly localized in the perinuclear membraneous region

### Tissue Location

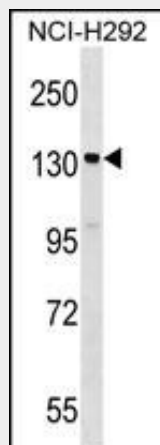
Expressed in fetal as well as in adult tissues. Expressed abundantly in the lymphoid tissues such as thymus, spleen and peripheral blood lymphocytes and also shows a significant expression in the spinal cord

### SIPA1 Antibody (C-term) - Protocols

Provided below are standard protocols that you may find useful for product applications.

- [Western Blot](#)
- [Blocking Peptides](#)
- [Dot Blot](#)
- [Immunohistochemistry](#)
- [Immunofluorescence](#)
- [Immunoprecipitation](#)
- [Flow Cytometry](#)
- [Cell Culture](#)

### SIPA1 Antibody (C-term) - Images



SIPA1 Antibody (C-term) (Cat. #AP16989b) western blot analysis in NCI-H292 cell line lysates (35ug/lane). This demonstrates the SIPA1 antibody detected the SIPA1 protein (arrow).

### SIPA1 Antibody (C-term) - Background

The product of this gene is a mitogen induced GTPase activating protein (GAP). It exhibits a specific GAP activity for Ras-related regulatory proteins Rap1 and Rap2, but not for Ran or other small GTPases. This protein may also hamper mitogen-induced cell cycle progression when abnormally or prematurely expressed. It

is localized to the perinuclear region. Two alternatively spliced variants encoding the same isoform have been characterized to date.

#### **SIPA1 Antibody (C-term) - References**

Bailey, S.D., et al. Diabetes Care 33(10):2250-2253(2010)  
Brooks, R., et al. Gynecol. Oncol. 116(3):539-543(2010)  
Hosgood, H.D. III, et al. Occup Environ Med 66(12):848-853(2009)  
Talmud, P.J., et al. Am. J. Hum. Genet. 85(5):628-642(2009)  
Hsieh, S.M., et al. Breast Cancer Res. 11 (5), R75 (2009) :