

ANP32B Antibody (N-term)
Affinity Purified Rabbit Polyclonal Antibody (Pab)
Catalog # AP17005a

Specification

ANP32B Antibody (N-term) - Product Information

Application	WB,E
Primary Accession	O92688
Other Accession	O3SZC6 , NP_006392.1 , O6A1I3
Reactivity	Human
Predicted	Bovine, Sheep
Host	Rabbit
Clonality	Polyclonal
Isotype	Rabbit IgG
Calculated MW	28788
Antigen Region	17-45

ANP32B Antibody (N-term) - Additional Information

Gene ID 10541

Other Names

Acidic leucine-rich nuclear phosphoprotein 32 family member B, Acidic protein rich in leucines, Putative HLA-DR-associated protein I-2, PHAPI2, Silver-stainable protein SSP29, ANP32B, APRIL, PHAPI2

Target/Specificity

This ANP32B antibody is generated from rabbits immunized with a KLH conjugated synthetic peptide between 17-45 amino acids from the N-terminal region of human ANP32B.

Dilution

WB~~1:1000

E~~Use at an assay dependent concentration.

Format

Purified polyclonal antibody supplied in PBS with 0.09% (W/V) sodium azide. This antibody is purified through a protein A column, followed by peptide affinity purification.

Storage

Maintain refrigerated at 2-8°C for up to 2 weeks. For long term storage store at -20°C in small aliquots to prevent freeze-thaw cycles.

Precautions

ANP32B Antibody (N-term) is for research use only and not for use in diagnostic or therapeutic procedures.

ANP32B Antibody (N-term) - Protein Information

Name ANP32B

Synonyms APRIL, PHAPI2

Function Multifunctional protein that is involved in the regulation of many processes including cell proliferation, apoptosis, cell cycle progression or transcription (PubMed:[18039846](#), PubMed:[20015864](#)). Regulates the proliferation of neuronal stem cells, differentiation of leukemic cells and progression from G1 to S phase of the cell cycle. As negative regulator of caspase-3-dependent apoptosis, may act as an antagonist of ANP32A in regulating tissue homeostasis (PubMed:[20015864](#)). Exhibits histone chaperone properties, able to recruit histones to certain promoters, thus regulating the transcription of specific genes (PubMed:[18039846](#), PubMed:[20538007](#)). Also plays an essential role in the nucleocytoplasmic transport of specific mRNAs via the uncommon nuclear mRNA export receptor XPO1/CRM1 (PubMed:[17178712](#)). Participates in the regulation of adequate adaptive immune responses by acting on mRNA expression and cell proliferation (By similarity).

Cellular Location

[Isoform 1]: Nucleus. Cytoplasm Note=Accumulates in the nuclei at the S phase.

Tissue Location

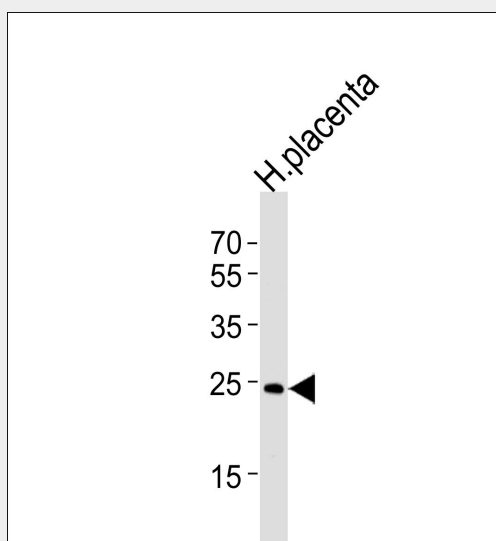
Expressed in heart, lung, pancreas, prostate and in spleen, thymus and placenta.

ANP32B Antibody (N-term) - Protocols

Provided below are standard protocols that you may find useful for product applications.

- [Western Blot](#)
- [Blocking Peptides](#)
- [Dot Blot](#)
- [Immunohistochemistry](#)
- [Immunofluorescence](#)
- [Immunoprecipitation](#)
- [Flow Cytometry](#)
- [Cell Culture](#)

ANP32B Antibody (N-term) - Images



Western blot analysis of lysate from human placenta tissue lysate, using ANP32B Antibody (N-term)(Cat. #AP17005a). AP17005a was diluted at 1:1000 at each lane. A goat anti-rabbit IgG H&L(HRP) at 1:5000 dilution was used as the secondary antibody. Lysate at 35ug per lane.

ANP32B Antibody (N-term) - Background

Multifunctional protein working as a cell cycle progression factor as well as a cell survival factor. Required for the progression from the G1 to the S phase. Anti-apoptotic protein which functions as a caspase-3 inhibitor. Has no phosphatase 2A (PP2A) inhibitor activity (By similarity).

ANP32B Antibody (N-term) - References

Tochio, N., et al. J. Mol. Biol. 401(1):97-114(2010)
Shen, S.M., et al. Carcinogenesis 31(3):419-426(2010)
Chemnitz, J., et al. Eur. J. Immunol. 39(1):267-279(2009)
Munemasa, Y., et al. Mol. Cell. Biol. 28(3):1171-1181(2008)
Olsen, J.V., et al. Cell 127(3):635-648(2006)