

**IL23R Antibody (C-term)**  
**Affinity Purified Rabbit Polyclonal Antibody (Pab)**  
**Catalog # AP17012b**

**Specification**

---

**IL23R Antibody (C-term) - Product Information**

Application	WB,E
Primary Accession	<a href="#">Q5VWK5</a>
Other Accession	<a href="#">NP_653302.2</a>
Reactivity	Human
Host	Rabbit
Clonality	Polyclonal
Isotype	Rabbit IgG
Calculated MW	71722
Antigen Region	428-457

**IL23R Antibody (C-term) - Additional Information**

**Gene ID** 149233

**Other Names**

Interleukin-23 receptor, IL-23 receptor, IL-23R, IL23R

**Target/Specificity**

This IL23R antibody is generated from rabbits immunized with a KLH conjugated synthetic peptide between 428-457 amino acids from the C-terminal region of human IL23R.

**Dilution**

WB~~1:1000

**Format**

Purified polyclonal antibody supplied in PBS with 0.09% (W/V) sodium azide. This antibody is purified through a protein A column, followed by peptide affinity purification.

**Storage**

Maintain refrigerated at 2-8°C for up to 2 weeks. For long term storage store at -20°C in small aliquots to prevent freeze-thaw cycles.

**Precautions**

IL23R Antibody (C-term) is for research use only and not for use in diagnostic or therapeutic procedures.

**IL23R Antibody (C-term) - Protein Information**

**Name** IL23R

**Function** Associates with IL12RB1 to form the interleukin-23 receptor. Binds IL23 and mediates T-cells, NK cells and possibly certain macrophage/myeloid cells stimulation probably through

activation of the Jak-Stat signaling cascade. IL23 functions in innate and adaptive immunity and may participate in acute response to infection in peripheral tissues. IL23 may be responsible for autoimmune inflammatory diseases and be important for tumorigenesis.

**Cellular Location**

Cell membrane; Single-pass type I membrane protein

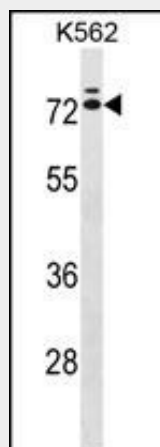
**Tissue Location**

Expressed by monocytes, Th1, Th0, NK and dendritic cells. Isoform 1 is specifically expressed in NK cells

**IL23R Antibody (C-term) - Protocols**

Provided below are standard protocols that you may find useful for product applications.

- [Western Blot](#)
- [Blocking Peptides](#)
- [Dot Blot](#)
- [Immunohistochemistry](#)
- [Immunofluorescence](#)
- [Immunoprecipitation](#)
- [Flow Cytometry](#)
- [Cell Culture](#)

**IL23R Antibody (C-term) - Images**

IL23R Antibody (C-term) (Cat. #AP17012b) western blot analysis in K562 cell line lysates (35ug/lane). This demonstrates the IL23R antibody detected the IL23R protein (arrow).

**IL23R Antibody (C-term) - Background**

The protein encoded by this gene is a subunit of the receptor for IL23A/IL23. This protein pairs with the receptor molecule IL12RB1/IL12Rbeta1, and both are required for IL23A signaling. This protein associates constitutively with Janus kinase 2 (JAK2), and also binds to transcription activator STAT3 in a ligand-dependent manner.

**IL23R Antibody (C-term) - References**

Bailey, S.D., et al. Diabetes Care 33(10):2250-2253(2010)  
Chen, J., et al. Mol. Carcinog. 49(10):862-868(2010)  
Mizuki, N., et al. Nat. Genet. 42(8):703-706(2010)  
Remmers, E.F., et al. Nat. Genet. 42(8):698-702(2010)  
Elmaagacli, A.H., et al. Bone Marrow Transplant. (2010) In press :