

PAX2 Antibody (Center)
Affinity Purified Rabbit Polyclonal Antibody (Pab)
Catalog # AP17017c

Specification

PAX2 Antibody (Center) - Product Information

Application	WB,E
Primary Accession	Q02962
Other Accession	NP_003978.2 , NP_000269.2
Reactivity	Human
Host	Rabbit
Clonality	Polyclonal
Isotype	Rabbit IgG
Calculated MW	44706
Antigen Region	187-216

PAX2 Antibody (Center) - Additional Information

Gene ID 5076

Other Names

Paired box protein Pax-2, PAX2

Target/Specificity

This PAX2 antibody is generated from rabbits immunized with a KLH conjugated synthetic peptide between 187-216 amino acids from the Central region of human PAX2.

Dilution

WB~~1:1000

E~~Use at an assay dependent concentration.

Format

Purified polyclonal antibody supplied in PBS with 0.09% (W/V) sodium azide. This antibody is purified through a protein A column, followed by peptide affinity purification.

Storage

Maintain refrigerated at 2-8°C for up to 2 weeks. For long term storage store at -20°C in small aliquots to prevent freeze-thaw cycles.

Precautions

PAX2 Antibody (Center) is for research use only and not for use in diagnostic or therapeutic procedures.

PAX2 Antibody (Center) - Protein Information

Name PAX2

Function Transcription factor that may have a role in kidney cell differentiation

(PubMed:[24676634](#)). Has a critical role in the development of the urogenital tract, the eyes, and the CNS.

Cellular Location

Nucleus.

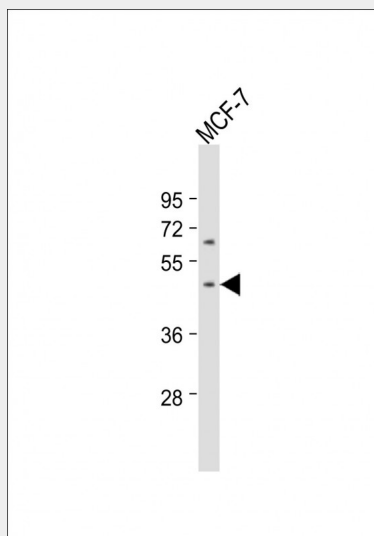
Tissue Location

Expressed in primitive cells of the kidney, ureter, eye, ear and central nervous system

PAX2 Antibody (Center) - Protocols

Provided below are standard protocols that you may find useful for product applications.

- [Western Blot](#)
- [Blocking Peptides](#)
- [Dot Blot](#)
- [Immunohistochemistry](#)
- [Immunofluorescence](#)
- [Immunoprecipitation](#)
- [Flow Cytometry](#)
- [Cell Culture](#)

PAX2 Antibody (Center) - Images

Anti-PAX2 Antibody (Center) at 1:1000 dilution + MCF-7 whole cell lysate Lysates/proteins at 20 µg per lane. Secondary Goat Anti-Rabbit IgG, (H+L), Peroxidase conjugated at 1/10000 dilution. Predicted band size : 45 kDa Blocking/Dilution buffer: 5% NFDm/TBST.

PAX2 Antibody (Center) - Background

PAX2 encodes paired box gene 2, one of many human homologues of the Drosophila melanogaster gene prd. The central feature of this transcription factor gene family is the conserved DNA-binding paired box domain. PAX2 is believed to be a target of transcriptional suppression by the tumor suppressor gene WT1. Mutations within PAX2 have been shown to result in optic nerve colobomas and renal hypoplasia. Alternative splicing of this gene

results in multiple transcript variants.

PAX2 Antibody (Center) - References

Monte, N.M., et al. Cancer Res. 70(15):6225-6232(2010)
Ozcan, A., et al. Arch. Pathol. Lab. Med. 134(8):1121-1129(2010)
Quick, C.M., et al. Hum. Pathol. 41(8):1145-1149(2010)
Martinovic-Bouriel, J., et al. Am. J. Med. Genet. A 152A (4), 830-835 (2010) :
Rabban, J.T., et al. Am. J. Surg. Pathol. 34(2):137-146(2010)