

**SCAND1 Antibody (C-term)**  
**Affinity Purified Rabbit Polyclonal Antibody (Pab)**  
**Catalog # AP17021b****Specification**

---

**SCAND1 Antibody (C-term) - Product Information**

Application	WB,E
Primary Accession	<a href="#">P57086</a>
Other Accession	<a href="#">NP_057642.1</a> , <a href="#">NP_361012.1</a>
Reactivity	Human
Host	Rabbit
Clonality	Polyclonal
Isotype	Rabbit IgG
Calculated MW	19082
Antigen Region	150-179

**SCAND1 Antibody (C-term) - Additional Information****Gene ID** 51282**Other Names**

SCAN domain-containing protein 1, SCAND1, SDP1

**Target/Specificity**

This SCAND1 antibody is generated from rabbits immunized with a KLH conjugated synthetic peptide between 150-179 amino acids from the C-terminal region of human SCAND1.

**Dilution**

WB~~1:1000

E~~Use at an assay dependent concentration.

**Format**

Purified polyclonal antibody supplied in PBS with 0.09% (W/V) sodium azide. This antibody is purified through a protein A column, followed by peptide affinity purification.

**Storage**

Maintain refrigerated at 2-8°C for up to 2 weeks. For long term storage store at -20°C in small aliquots to prevent freeze-thaw cycles.

**Precautions**

SCAND1 Antibody (C-term) is for research use only and not for use in diagnostic or therapeutic procedures.

**SCAND1 Antibody (C-term) - Protein Information****Name** SCAND1**Synonyms** SDP1

**Function** May regulate transcriptional activity.

**Cellular Location**

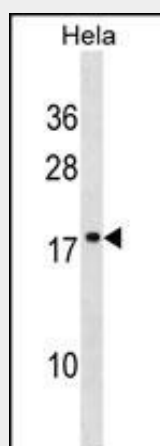
Nucleus {ECO:0000255|PROSITE-ProRule:PRU00187}.

**SCAND1 Antibody (C-term) - Protocols**

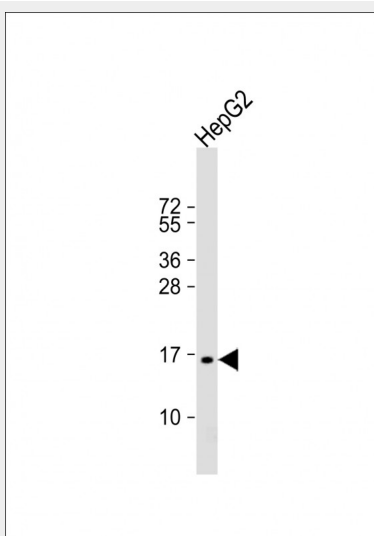
Provided below are standard protocols that you may find useful for product applications.

- [Western Blot](#)
- [Blocking Peptides](#)
- [Dot Blot](#)
- [Immunohistochemistry](#)
- [Immunofluorescence](#)
- [Immunoprecipitation](#)
- [Flow Cytometry](#)
- [Cell Culture](#)

**SCAND1 Antibody (C-term) - Images**



SCAND1 Antibody (C-term) (Cat. #AP17021b) western blot analysis in HeLa cell line lysates (35ug/lane). This demonstrates the SCAND1 antibody detected the SCAND1 protein (arrow).



Anti-SCAND1 Antibody (C-term) at 1:1000 dilution + HepG2 whole cell lysate Lysates/proteins at 20 µg per lane. Secondary Goat Anti-Rabbit IgG, (H+L), Peroxidase conjugated at 1/10000 dilution. Predicted band size : 19 kDa Blocking/Dilution buffer: 5% NFDM/TBST.

#### **SCAND1 Antibody (C-term) - Background**

The SCAN domain is a highly conserved, leucine-rich motif of approximately 60 aa originally found within a subfamily of zinc finger proteins. This gene belongs to a family of genes that encode an isolated SCAN domain, but no zinc finger motif. Functional studies have established that the SCAN box is a protein interaction domain that mediates both hetero- and homoprotein associations, and maybe involved in regulation of transcriptional activity. Two transcript variants with different 5' UTRs, but encoding the same protein, have been described for this gene.

#### **SCAND1 Antibody (C-term) - References**

Lu, Y., et al. J. Lipid Res. 49(12):2582-2589(2008)  
Carneiro, F.R., et al. Biochem. Biophys. Res. Commun. 343(1):260-268(2006)  
Babb, R., et al. Biochem. J. 370 (PT 2), 719-727 (2003) :  
Sander, T.L., et al. Gene 296 (1-2), 53-64 (2002) :  
Deloukas, P., et al. Nature 414(6866):865-871(2001)