

CYP21A2 Antibody (Center)
Affinity Purified Rabbit Polyclonal Antibody (Pab)
Catalog # AP17032C**Specification**

CYP21A2 Antibody (Center) - Product Information

Application	WB,E
Primary Accession	P08686
Reactivity	Human
Host	Rabbit
Clonality	Polyclonal
Isotype	Rabbit IgG
Calculated MW	56001
Antigen Region	160-188

CYP21A2 Antibody (Center) - Additional Information**Gene ID** 1589**Other Names**

Steroid 21-hydroxylase, 21-OHase, Cytochrome P-450c21, Cytochrome P450 21, Cytochrome P450 XXI, Cytochrome P450-C21, Cytochrome P450-C21B, CYP21A2, CYP21, CYP21B

Target/Specificity

This CYP21A2 antibody is generated from rabbits immunized with a KLH conjugated synthetic peptide between 160-188 amino acids from the Central region of human CYP21A2.

Dilution

WB~~1:1000

E~~Use at an assay dependent concentration.

Format

Purified polyclonal antibody supplied in PBS with 0.09% (W/V) sodium azide. This antibody is purified through a protein A column, followed by peptide affinity purification.

Storage

Maintain refrigerated at 2-8°C for up to 2 weeks. For long term storage store at -20°C in small aliquots to prevent freeze-thaw cycles.

Precautions

CYP21A2 Antibody (Center) is for research use only and not for use in diagnostic or therapeutic procedures.

CYP21A2 Antibody (Center) - Protein Information**Name** CYP21A2**Synonyms** CYP21, CYP21B

Function A cytochrome P450 monooxygenase that plays a major role in adrenal steroidogenesis. Catalyzes the hydroxylation at C-21 of progesterone and 17alpha-hydroxyprogesterone to respectively form 11- deoxycorticosterone and 11-deoxycortisol, intermediate metabolites in the biosynthetic pathway of mineralocorticoids and glucocorticoids (PubMed:[10602386](#), PubMed:[16984992](#), PubMed:[22014889](#), PubMed:[25855791](#), PubMed:[27721825](#)). Mechanistically, uses molecular oxygen inserting one oxygen atom into a substrate, and reducing the second into a water molecule, with two electrons provided by NADPH via cytochrome P450 reductase (CPR; NADPH-ferrihemoprotein reductase) (PubMed:[25855791](#)).

Cellular Location

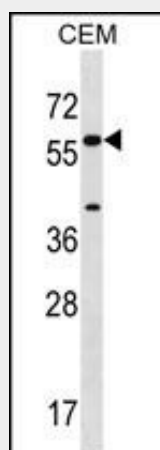
Endoplasmic reticulum membrane; Peripheral membrane protein. Microsome membrane; Peripheral membrane protein

CYP21A2 Antibody (Center) - Protocols

Provided below are standard protocols that you may find useful for product applications.

- [Western Blot](#)
- [Blocking Peptides](#)
- [Dot Blot](#)
- [Immunohistochemistry](#)
- [Immunofluorescence](#)
- [Immunoprecipitation](#)
- [Flow Cytometry](#)
- [Cell Culture](#)

CYP21A2 Antibody (Center) - Images



CYP21A2 Antibody (Center) (Cat. #AP17032c) western blot analysis in CEM cell line lysates (35ug/lane). This demonstrates the CYP21A2 antibody detected the CYP21A2 protein (arrow).

CYP21A2 Antibody (Center) - Background

Specifically catalyzes the 21-hydroxylation of steroids. Required for the adrenal synthesis of mineralocorticoids and glucocorticoids.