

**HRH4 Antibody (Center)**  
**Affinity Purified Rabbit Polyclonal Antibody (Pab)**  
**Catalog # AP17035C****Specification**

---

**HRH4 Antibody (Center) - Product Information**

Application	WB,E
Primary Accession	<a href="#">O9H3N8</a>
Other Accession	<a href="#">NP_067637.2</a> , <a href="#">NP_001153638.1</a>
Reactivity	Human
Host	Rabbit
Clonality	Polyclonal
Isotype	Rabbit IgG
Calculated MW	44496
Antigen Region	228-256

**HRH4 Antibody (Center) - Additional Information****Gene ID** 59340**Other Names**

Histamine H4 receptor, H4R, HH4R, AXOR35, G-protein coupled receptor 105, GPRv53, Pfi-013, SP9144, HRH4, GPCR105

**Target/Specificity**

This HRH4 antibody is generated from rabbits immunized with a KLH conjugated synthetic peptide between 228-256 amino acids from the Central region of human HRH4.

**Dilution**

WB~~1:1000

E~~Use at an assay dependent concentration.

**Format**

Purified polyclonal antibody supplied in PBS with 0.09% (W/V) sodium azide. This antibody is purified through a protein A column, followed by peptide affinity purification.

**Storage**

Maintain refrigerated at 2-8°C for up to 2 weeks. For long term storage store at -20°C in small aliquots to prevent freeze-thaw cycles.

**Precautions**

HRH4 Antibody (Center) is for research use only and not for use in diagnostic or therapeutic procedures.

**HRH4 Antibody (Center) - Protein Information****Name** HRH4

## Synonyms GPCR105

**Function** The H4 subclass of histamine receptors could mediate the histamine signals in peripheral tissues. Displays a significant level of constitutive activity (spontaneous activity in the absence of agonist).

## Cellular Location

Cell membrane; Multi-pass membrane protein

## Tissue Location

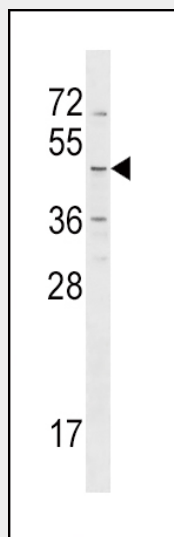
Expressed primarily in the bone marrow and eosinophils. Shows preferential distribution in cells of immunological relevance such as T-cells, dendritic cells, monocytes, mast cells, neutrophils. Also expressed in a wide variety of peripheral tissues, including the heart, kidney, liver, lung, pancreas, skeletal muscle, prostate, small intestine, spleen, testis, colon, fetal liver and lymph node.

## HRH4 Antibody (Center) - Protocols

Provided below are standard protocols that you may find useful for product applications.

- [Western Blot](#)
- [Blocking Peptides](#)
- [Dot Blot](#)
- [Immunohistochemistry](#)
- [Immunofluorescence](#)
- [Immunoprecipitation](#)
- [Flow Cytometry](#)
- [Cell Culture](#)

## HRH4 Antibody (Center) - Images



HRH4 Antibody (Center) (Cat. #AP17035c) western blot analysis in NCI-H460 cell line lysates (35ug/lane). This demonstrates the HRH4 antibody detected the HRH4 protein (arrow).

## HRH4 Antibody (Center) - Background

Histamine is a ubiquitous messenger molecule released from mast cells, enterochromaffin-like cells, and neurons. Its various

actions are mediated by a family of histamine receptors, which are a subset of the G-protein coupled receptor superfamily. This gene encodes a histamine receptor that is predominantly expressed in haematopoietic cells. The protein is thought to play a role in inflammation and allergy responses. Multiple transcript variants encoding different isoforms have been found for this gene.

#### **HRH4 Antibody (Center) - References**

Yu, B., et al. Br. J. Dermatol. 163(5):935-940(2010)  
Gschwandtner, M., et al. Allergy 65(7):840-849(2010)  
Yu, B., et al. Br. J. Dermatol. 162(5):1038-1043(2010)  
Davila, S., et al. Genes Immun. 11(3):232-238(2010)  
Smits, R.A., et al. J. Med. Chem. 53(6):2390-2400(2010)