

SAP30 Antibody (C-term)
Affinity Purified Rabbit Polyclonal Antibody (Pab)
Catalog # AP17053b**Specification**

SAP30 Antibody (C-term) - Product Information

Application	WB,E
Primary Accession	O75446
Other Accession	NP_003855.1
Reactivity	Human
Host	Rabbit
Clonality	Polyclonal
Isotype	Rabbit IgG
Calculated MW	23306
Antigen Region	189-218

SAP30 Antibody (C-term) - Additional Information**Gene ID** 8819**Other Names**

Histone deacetylase complex subunit SAP30, 30 kDa Sin3-associated polypeptide, Sin3 corepressor complex subunit SAP30, Sin3-associated polypeptide p30, SAP30 (http://www.genenames.org/cgi-bin/gene_symbol_report?hgnc_id=10532)
target="_blank">HGNC:10532)

Target/Specificity

This SAP30 antibody is generated from rabbits immunized with a KLH conjugated synthetic peptide between 189-218 amino acids from the C-terminal region of human SAP30.

Dilution

WB~~1:1000

Format

Purified polyclonal antibody supplied in PBS with 0.09% (W/V) sodium azide. This antibody is purified through a protein A column, followed by peptide affinity purification.

Storage

Maintain refrigerated at 2-8°C for up to 2 weeks. For long term storage store at -20°C in small aliquots to prevent freeze-thaw cycles.

Precautions

SAP30 Antibody (C-term) is for research use only and not for use in diagnostic or therapeutic procedures.

SAP30 Antibody (C-term) - Protein Information**Name** SAP30 ([HGNC:10532](#))

Function Involved in the functional recruitment of the Sin3-histone deacetylase complex (HDAC) to a specific subset of N-CoR corepressor complexes. Capable of transcription repression by N-CoR. Active in deacetylating core histone octamers (when in a complex) but inactive in deacetylating nucleosomal histones.

Cellular Location

Nucleus.

Tissue Location

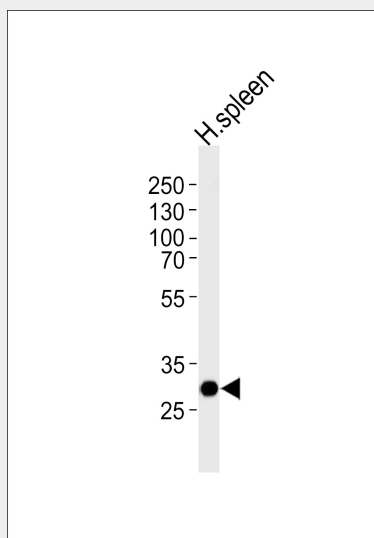
Expressed in all tissues tested with highest levels in pancreas, ovary, PBL, spleen and thymus; lowest levels in brain, placenta, lung and kidney.

SAP30 Antibody (C-term) - Protocols

Provided below are standard protocols that you may find useful for product applications.

- [Western Blot](#)
- [Blocking Peptides](#)
- [Dot Blot](#)
- [Immunohistochemistry](#)
- [Immunofluorescence](#)
- [Immunoprecipitation](#)
- [Flow Cytometry](#)
- [Cell Culture](#)

SAP30 Antibody (C-term) - Images



Western blot analysis of lysate from human spleen tissue lysate, using SAP30 Antibody (C-term)(Cat. #AP17053b). AP17053b was diluted at 1:1000 at each lane. A goat anti-rabbit IgG H&L(HRP) at 1:5000 dilution was used as the secondary antibody. Lysate at 35ug per lane.

SAP30 Antibody (C-term) - Background

Histone acetylation plays a key role in the regulation of eukaryotic gene expression. Histone acetylation and deacetylation are catalyzed by multisubunit complexes. The protein encoded by this gene is a component of the histone deacetylase complex, which

includes SIN3, SAP18, HDAC1, HDAC2, RbAp46, RbAp48, and other polypeptides. This complex is active in deacetylating core histone octamers, but inactive in deacetylating nucleosomal histones. A pseudogene of this gene is located on chromosome 3. [provided by RefSeq].

SAP30 Antibody (C-term) - References

Brandt, S., et al. Int. J. Biochem. Cell Biol. 42(9):1472-1481(2010)
Viiri, K.M., et al. Mol. Cell. Biol. 29(2):342-356(2009)
Sichtig, N., et al. Arch. Biochem. Biophys. 467(1):67-75(2007)
Szafranski, K., et al. Genome Biol. 8 (8), R154 (2007) :
Olsen, J.V., et al. Cell 127(3):635-648(2006)